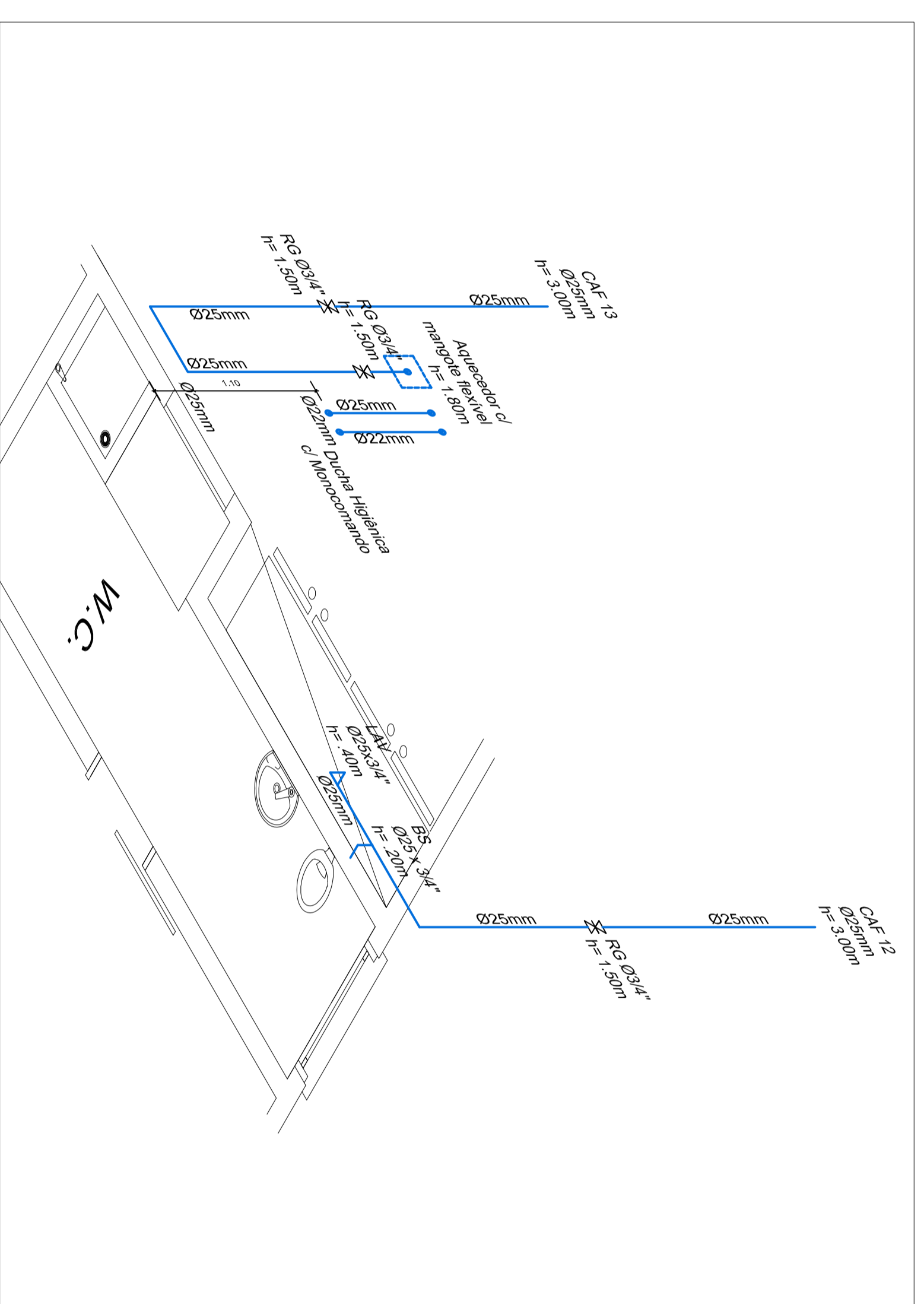
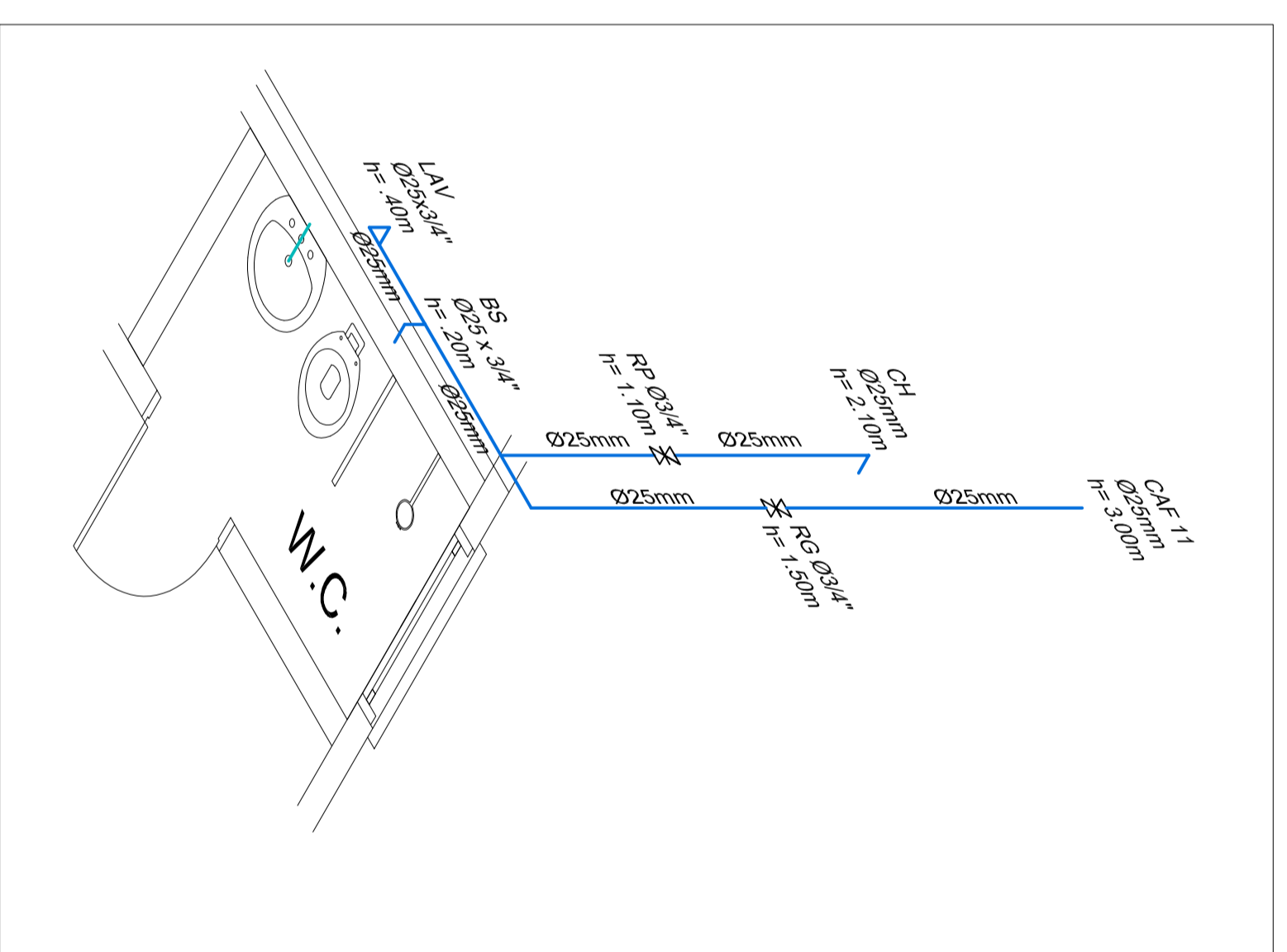


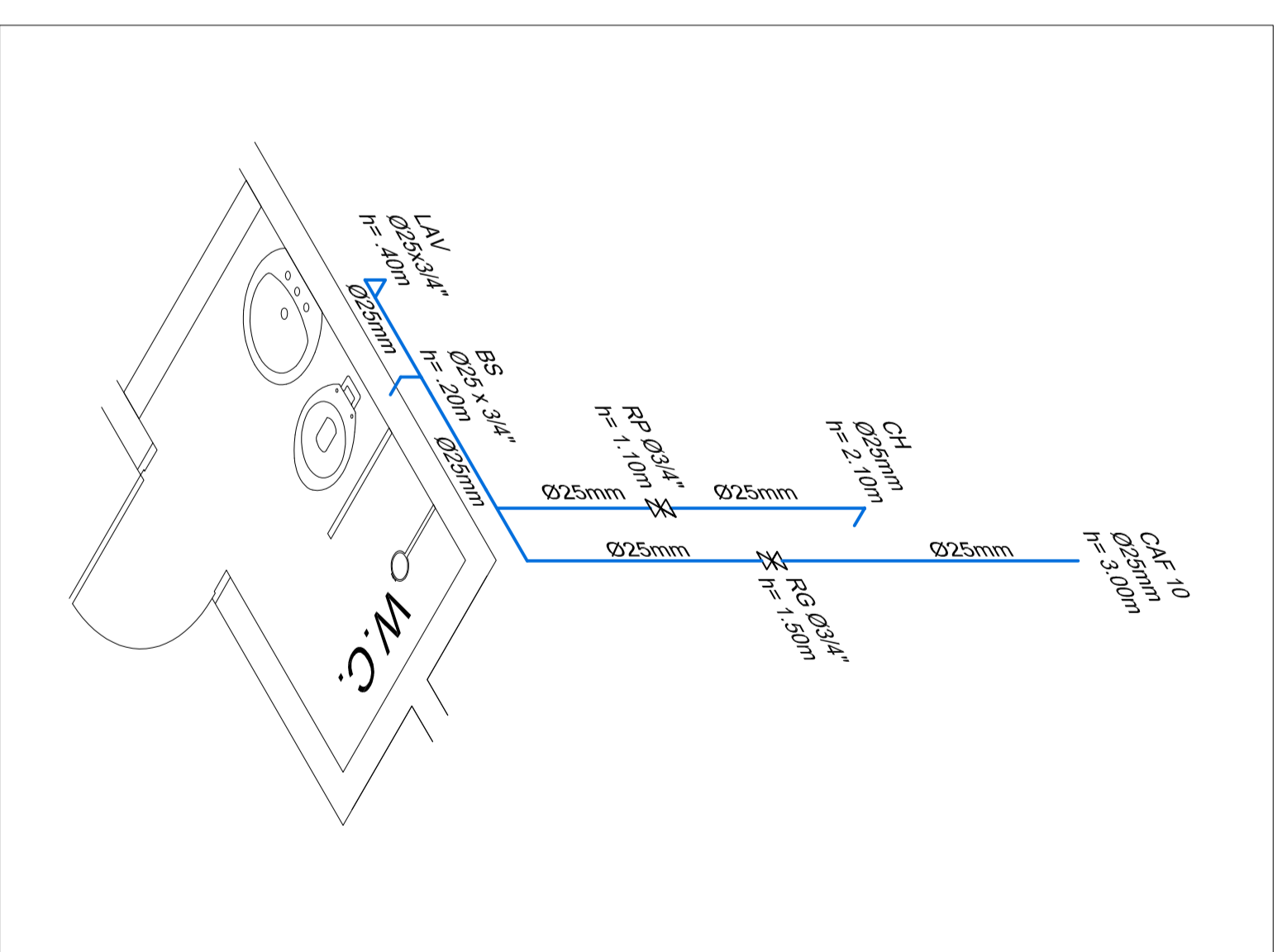
**Estereograma 11**  
Escala:1/25



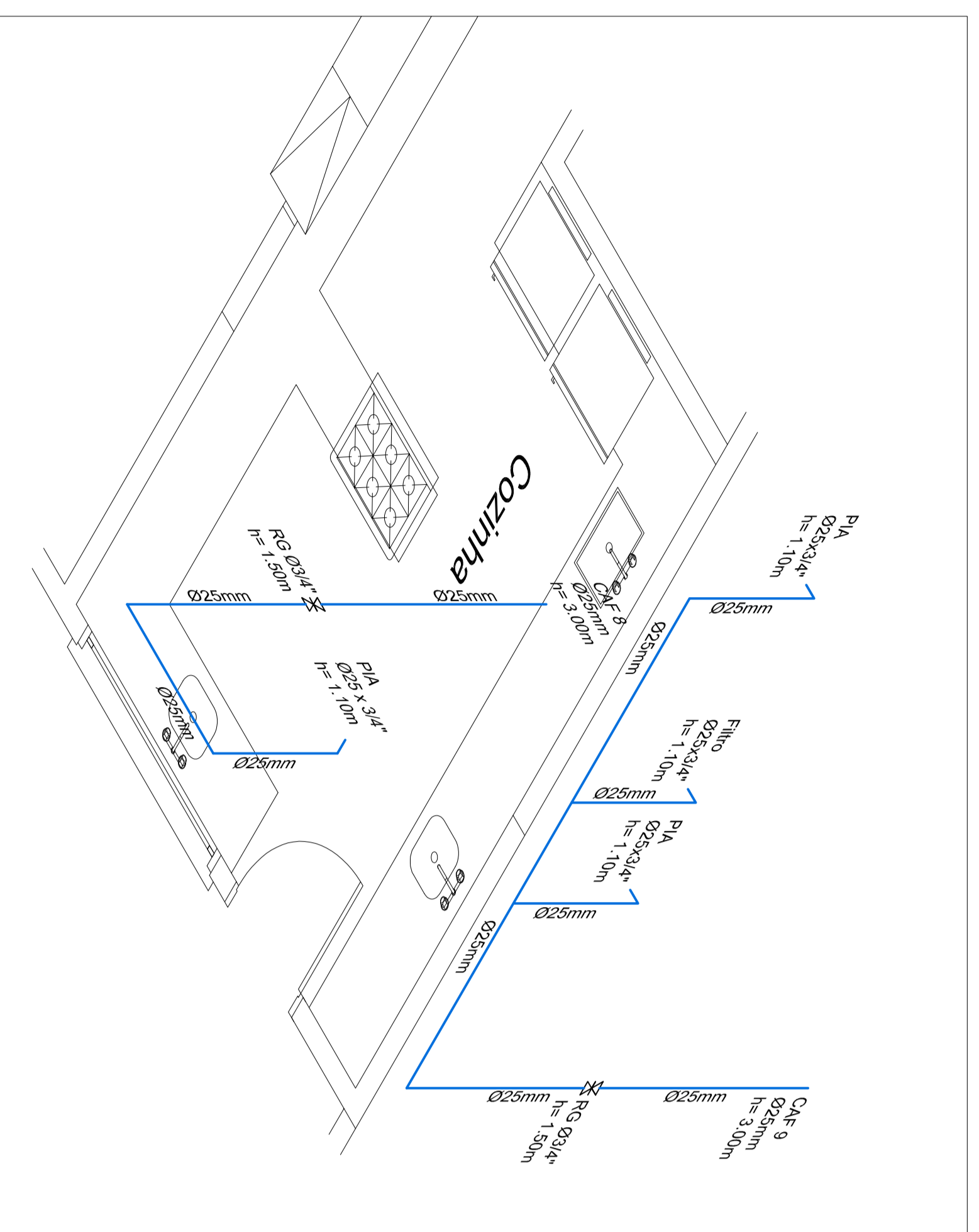
**Estereograma 10**  
Escala:1/25



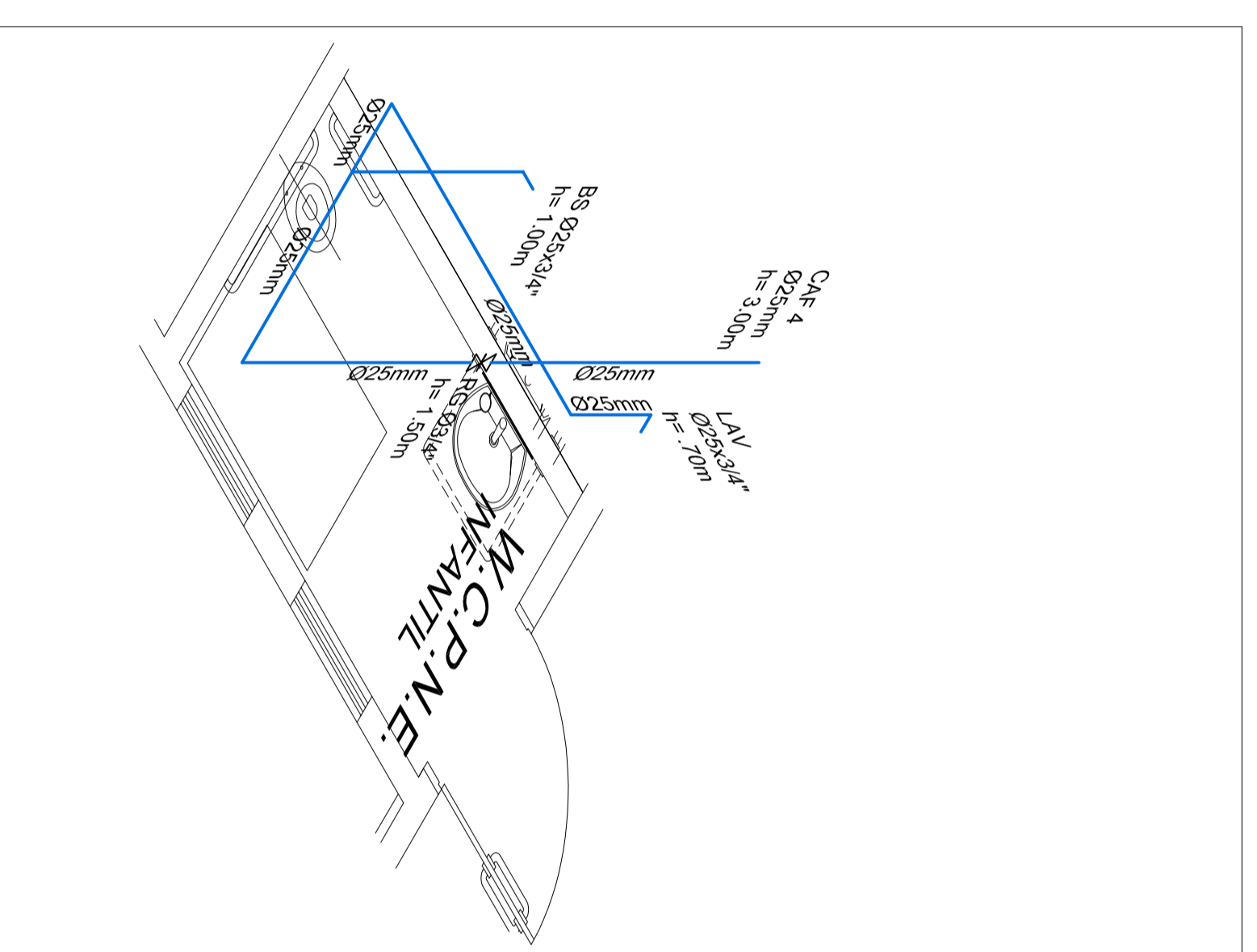
**Estereograma 9**  
Escala:1/25



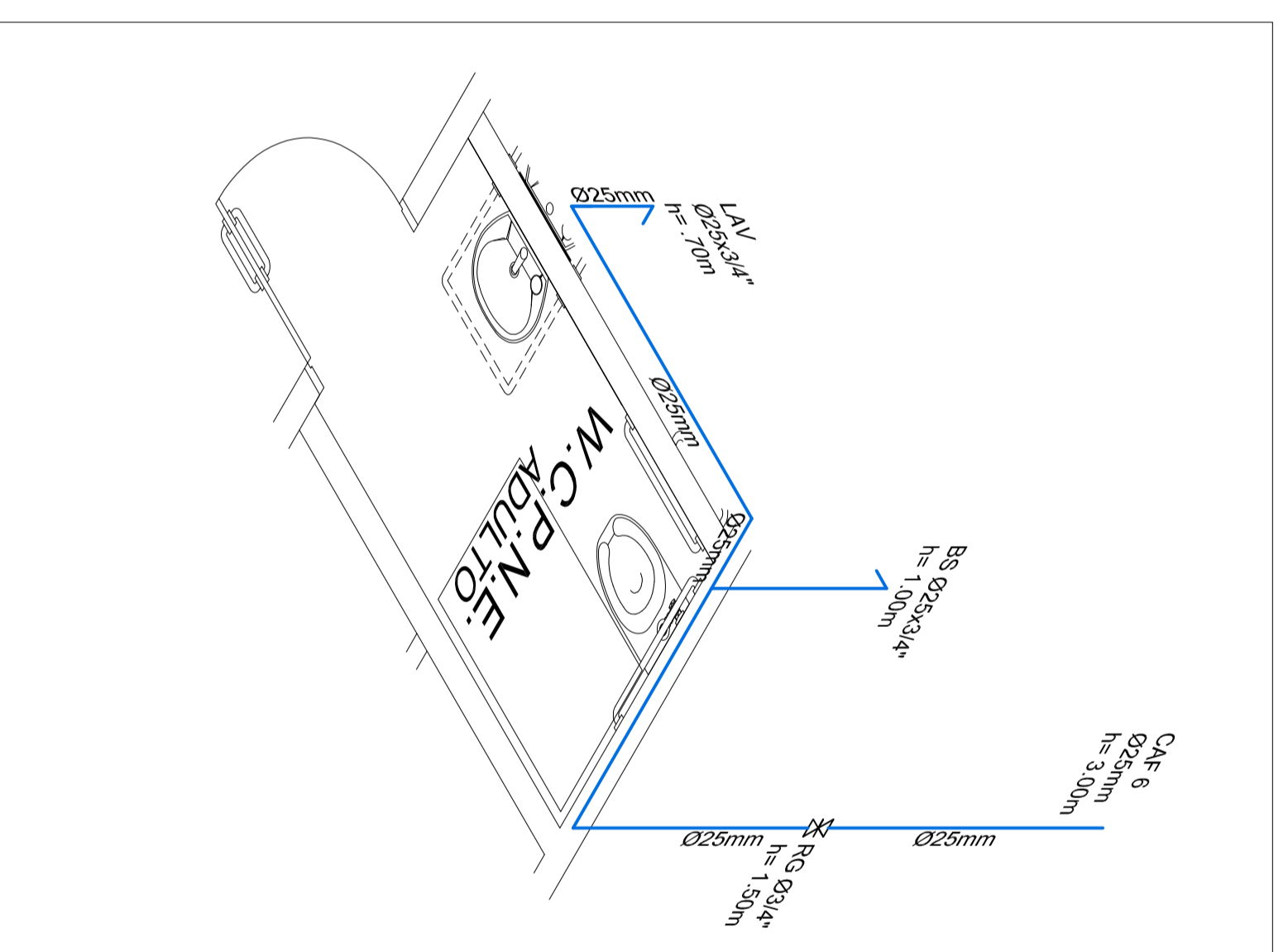
**Estereograma 8**  
Escala:1/25



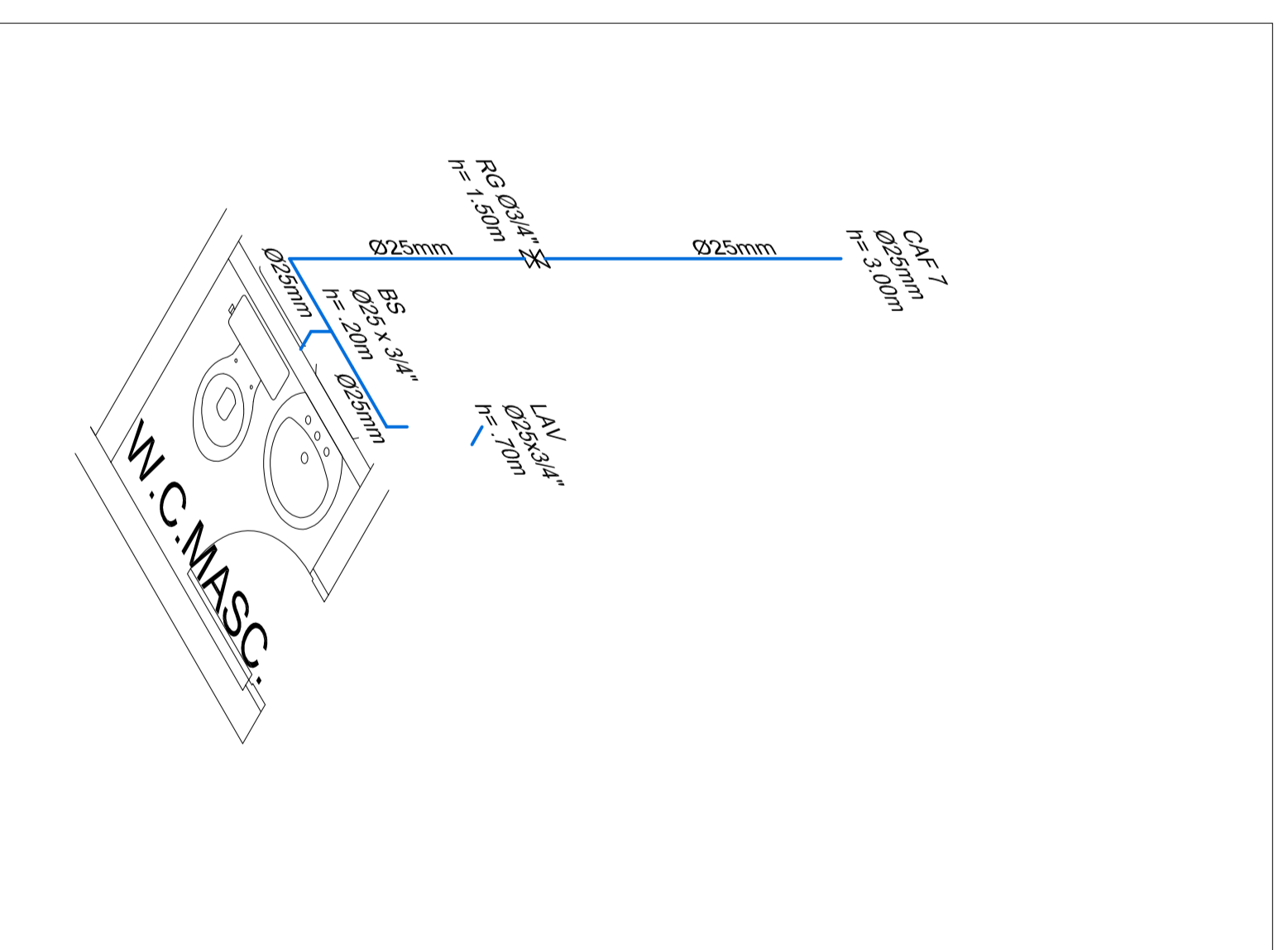
**Estereograma 7**  
Escala:1/25



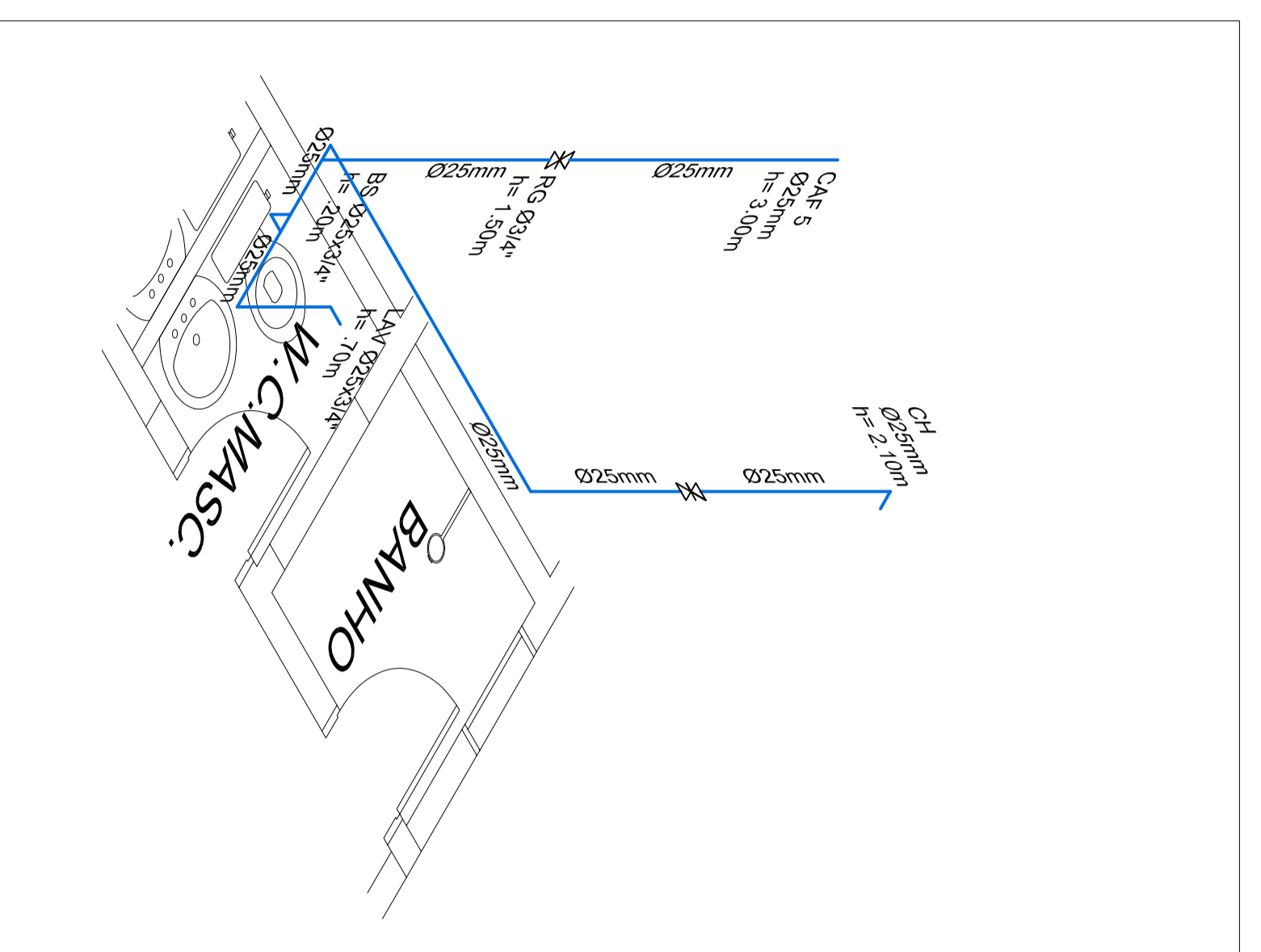
**Estereograma 6**  
Escala:1/25



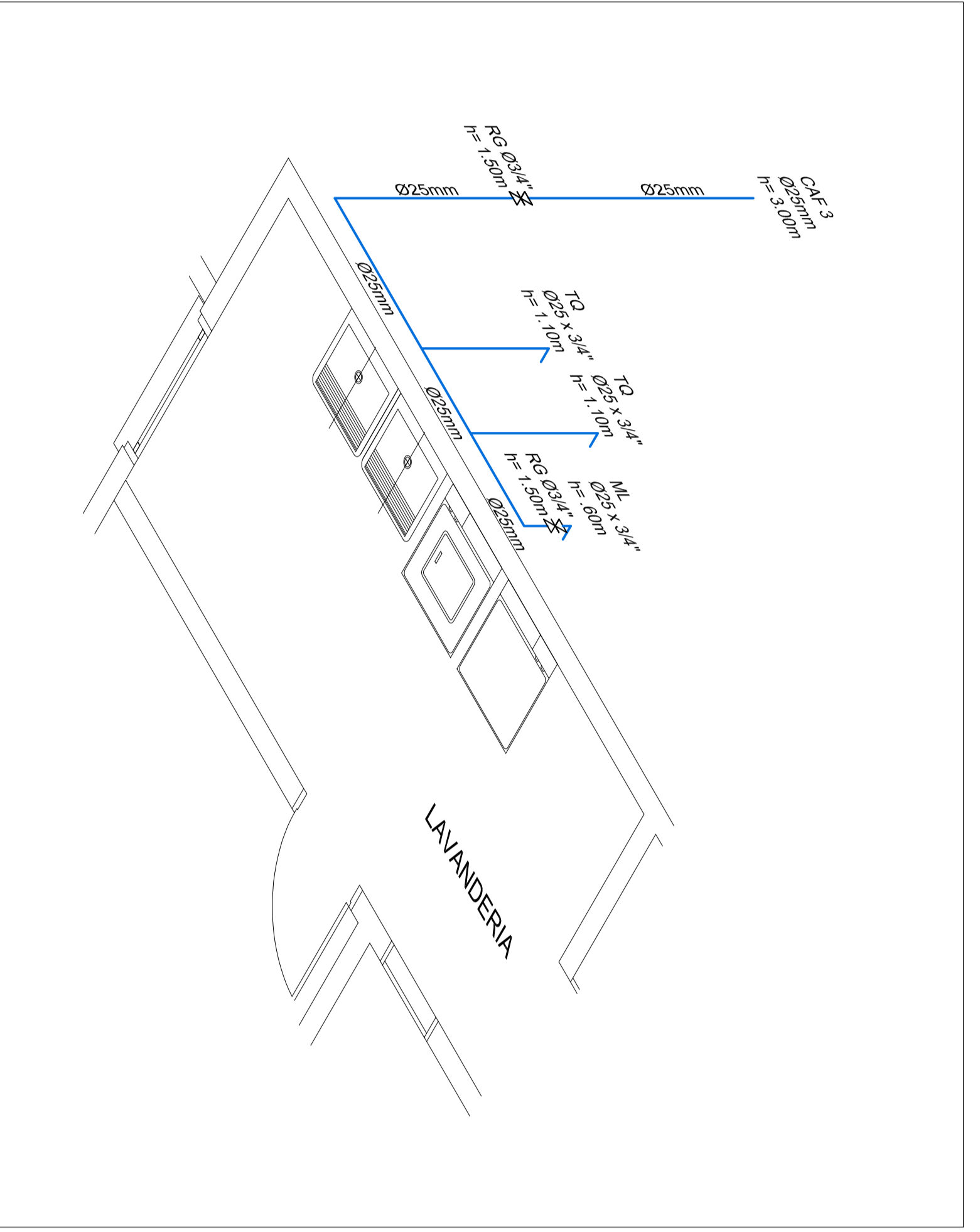
**Estereograma 5**  
Escala:1/25



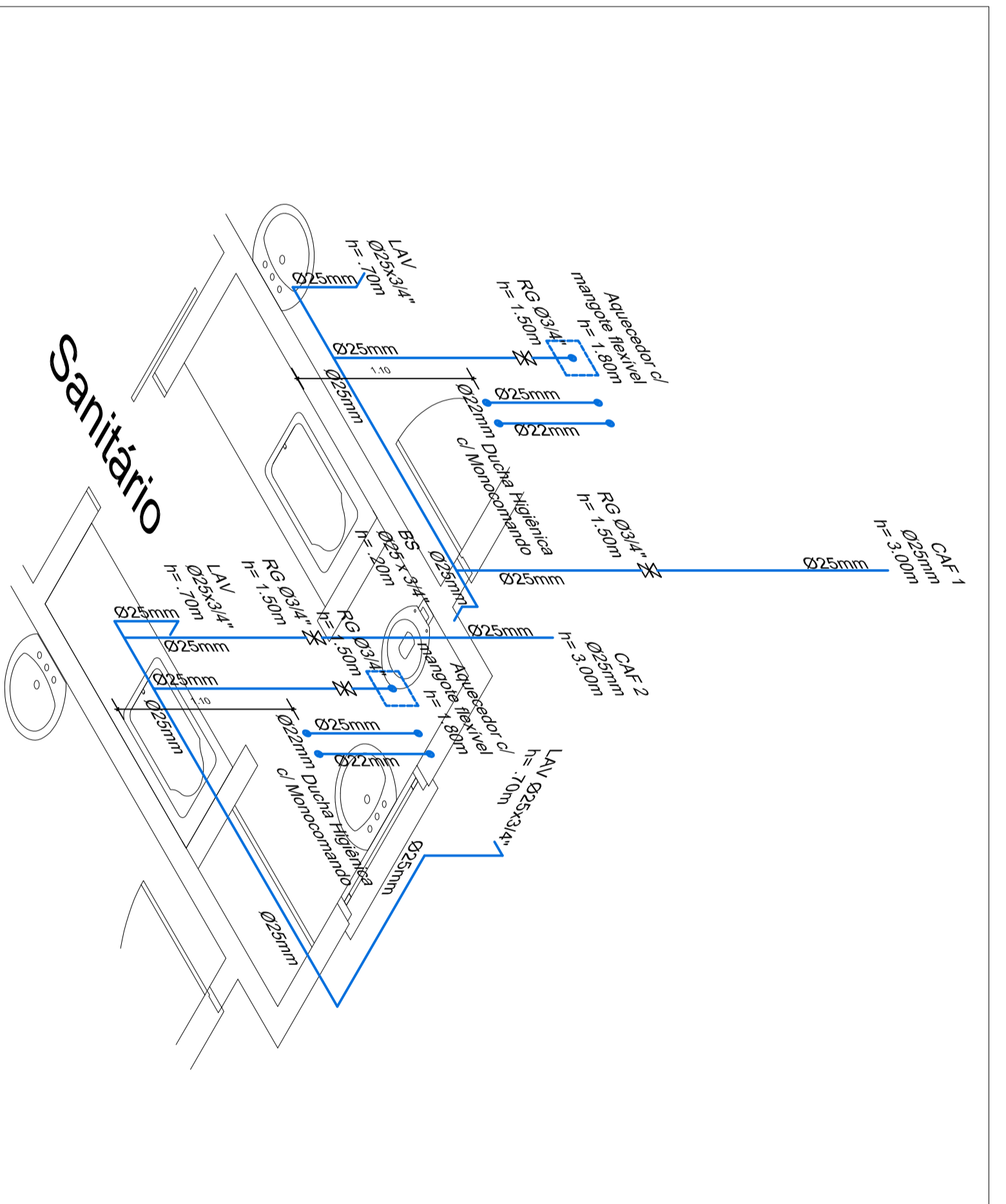
**Estereograma 4**  
Escala:1/25




**Estereograma 3**  
Escala:1/25



**Estereograma 2**  
Escala:1/25



**Estereograma 1**  
Escala:1/25

REVISÃO	DATA	RESPONSÁVEL	OBSERVAÇÃO
 <b>PREFEITURA MUNICIPAL DE PELotas</b> DEPARTAMENTO DE PLANEJAMENTO E ENGENHARIA <b>EMEI JOSÉ LINS DO REGO</b>			
SECRETARIA MUNICIPAL DA EDUCAÇÃO			
PROJETO:			
PROJETO: <b>PROJETO HIDROSSANITÁRIO</b>		FRANCHA:	
ENGENHEIRO: <b>Angela Gotwender</b> Registro Profissional: Angela C. Borrembecker RUA CARA TULIO, 307 PRÉDIO 100000000000 CNPJ: 06.908.000/0001-91 e-mail: angela@emepelotas.org.br			
COORDENADOR DO PROJETO: <b>Angela C. Borrembecker</b> CNPJ: 06.908.000/0001-91 CART. 4314145			
CONTEÚDO: <b>Estereogramas</b>			
LOCAL, DATA: <b>ESCALA: 1/25</b>			