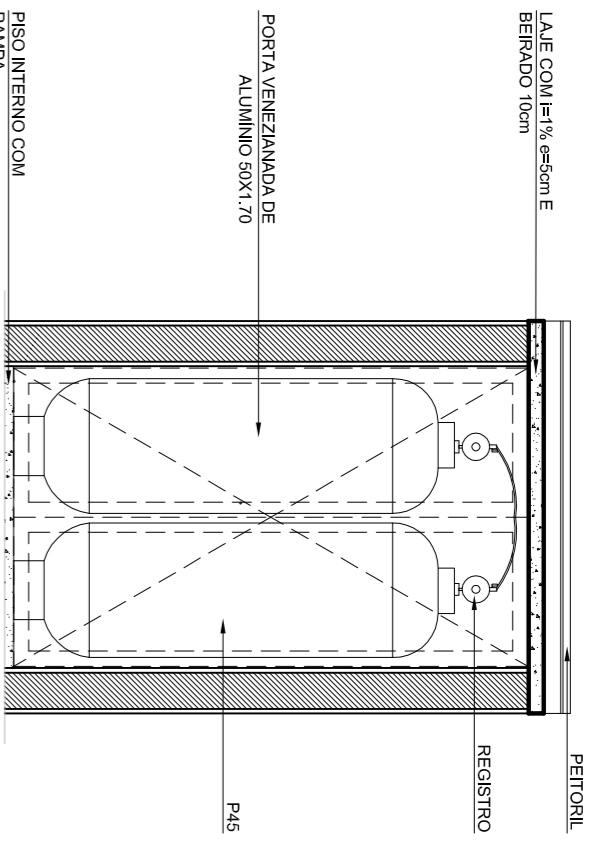
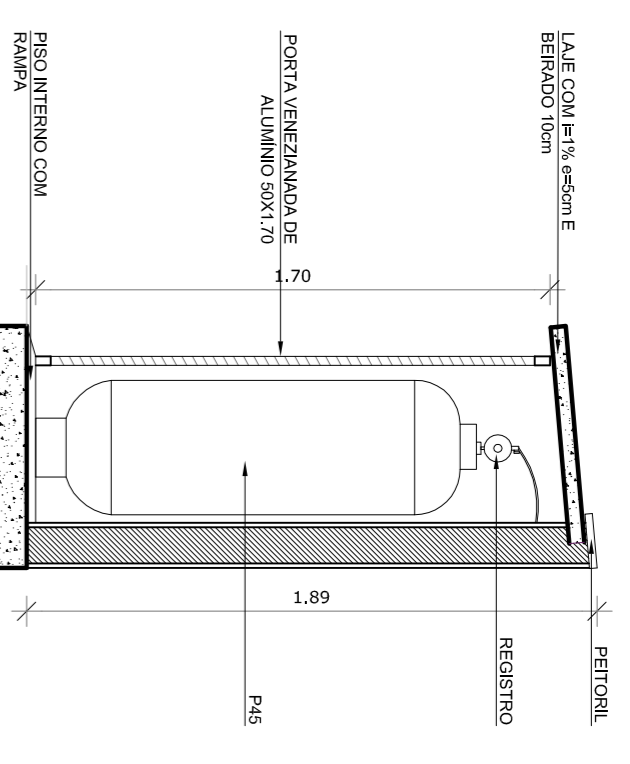


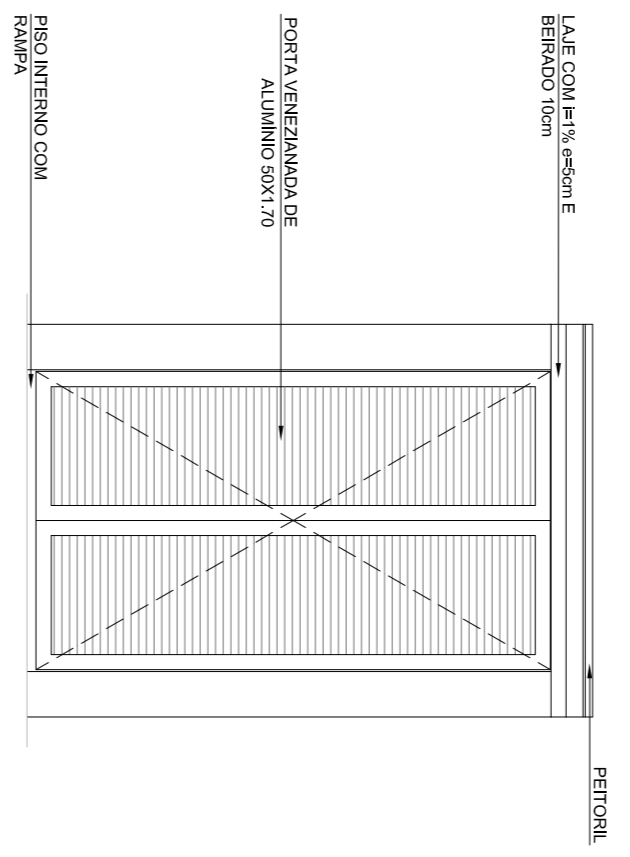
PLANTA BAIXA



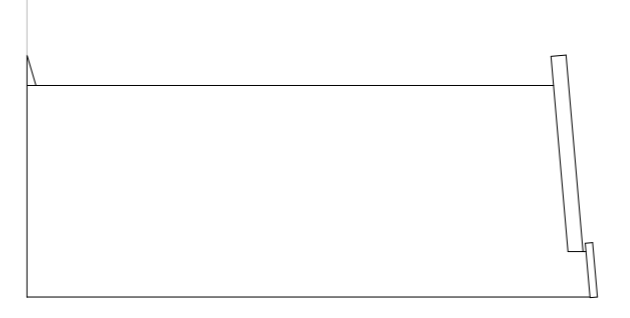
CORTE FRONTAL



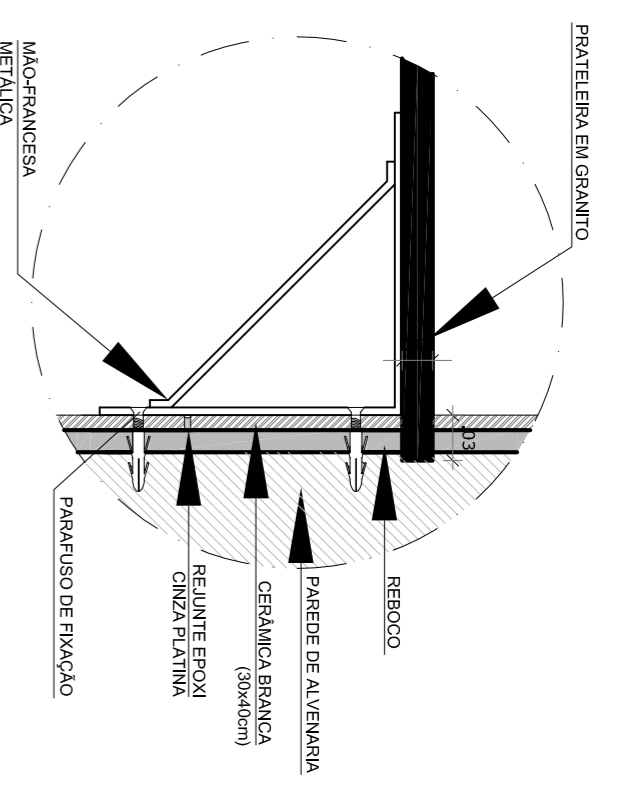
CORTE LATERAL



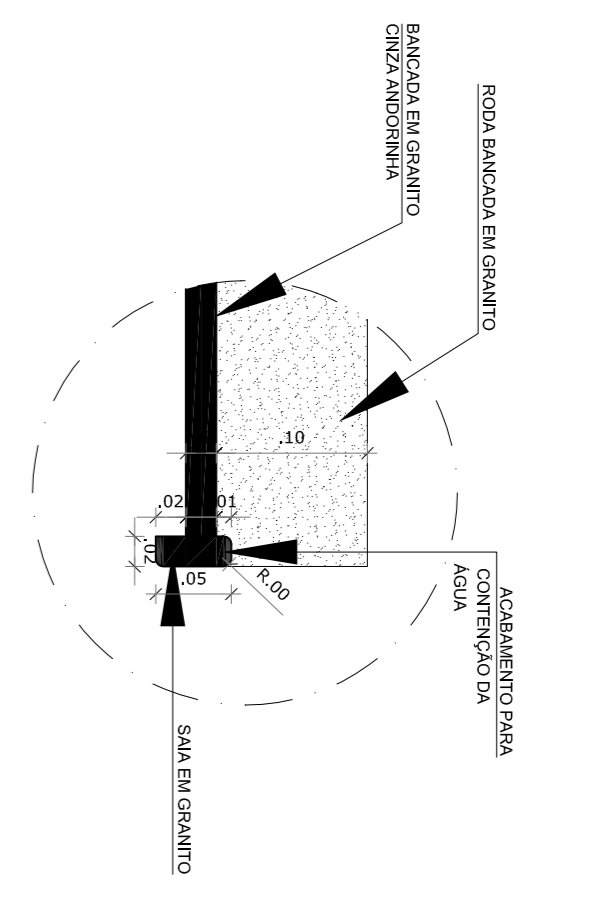
VISTA FRONTAL



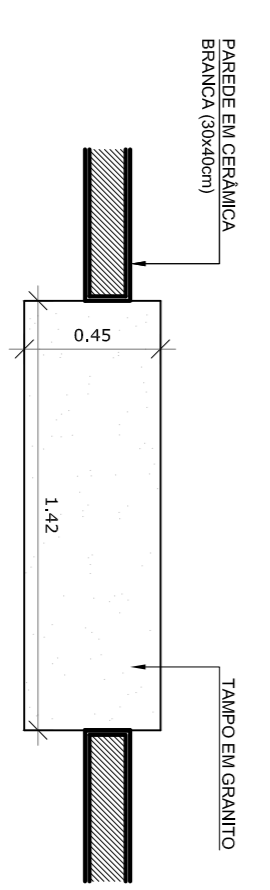
VISTA LATERAL



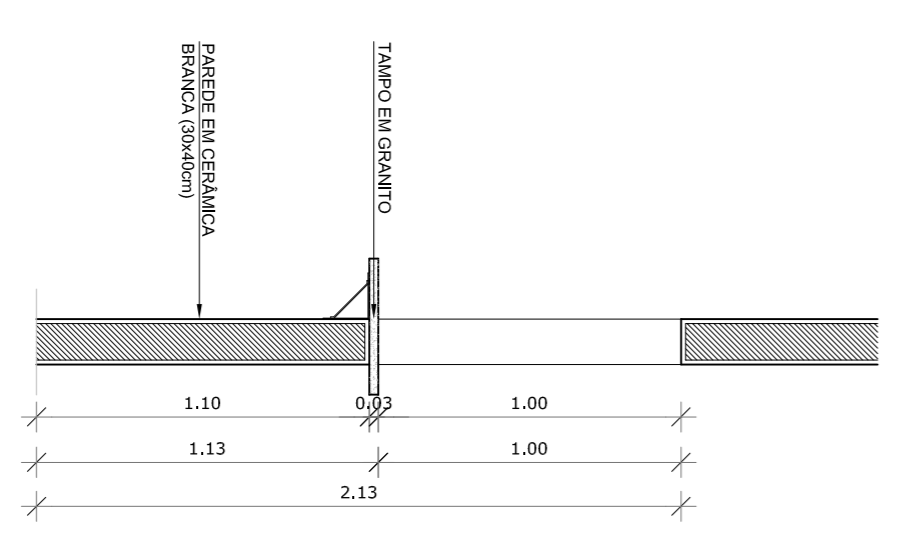
DETALHE PRATELEIRA DE GRANITO
ESC.: 1/5



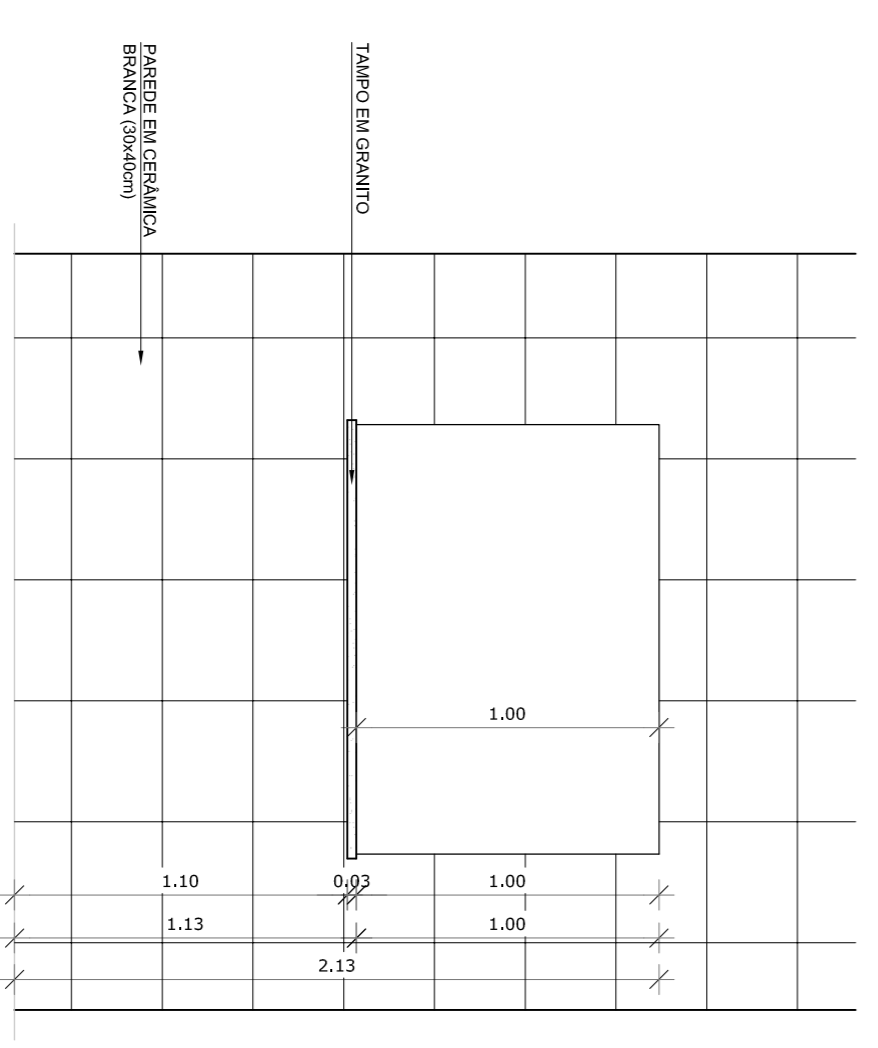
DETALHE BANCADA DE GRANITO - ÁREA MOLHADA
ESC.: 1/5



PLANTA BAIXA



CORTE



VISTA FRONTAL

<p>SECRETARIA MUNICIPAL DE EDUCAÇÃO</p> <p>EMEI JOSE LINS DO REGO</p>		
<p>SECRETARIA MUNICIPAL DA EDUCAÇÃO</p> <p>PREFEITURA MUNICIPAL DE PELOTAS</p> <p>SECRETARIA MUNICIPAL DA EDUCAÇÃO</p> <p>DEPARTAMENTO DE PLANEJAMENTO E ENGENHARIA</p>		
PROJETO:	PROJETO ARQUITETÔNICO	PRANCHA:
ENDEREÇO:	Rua Barão de Itamaracá, 690 - Areal	
CONTEÚDO:	Detalhe - Casa do gás e passa-pratos	
LOCAL E DATA:	Pedras, outubro de 2014.	ESCALA:
		1/25

Angela Bosenbecker
 RUA GEM, TELER, 347
 FLORES DE LOPIS, 33030-010
 FONE: 33830041
 e-mail: angela@bosenbecker.com.br
 Projeto Arquitetônico: Angela C. Bosenbecker
 CAU - A31414-5
 Coordenação do Projeto: Angela C. Bosenbecker
 CAU - A31414-5

PA-10