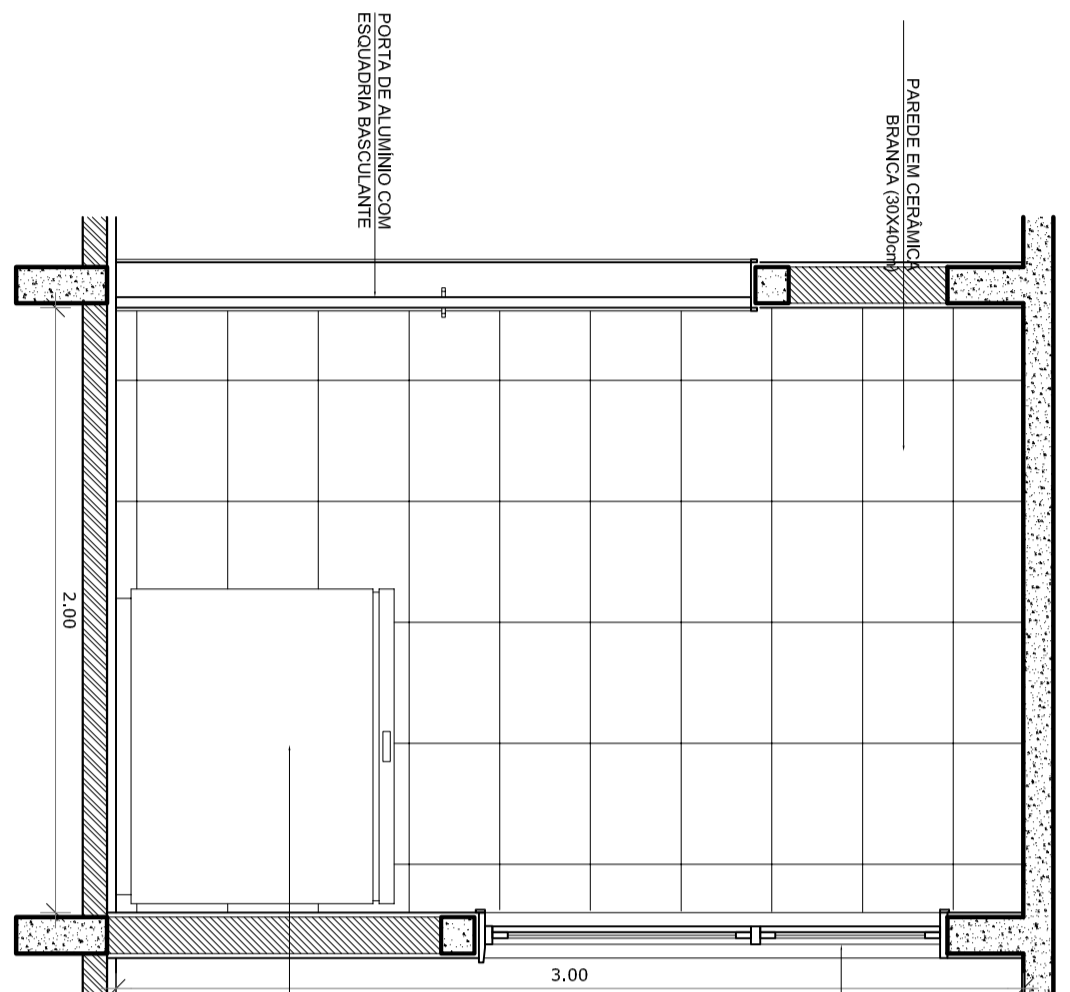
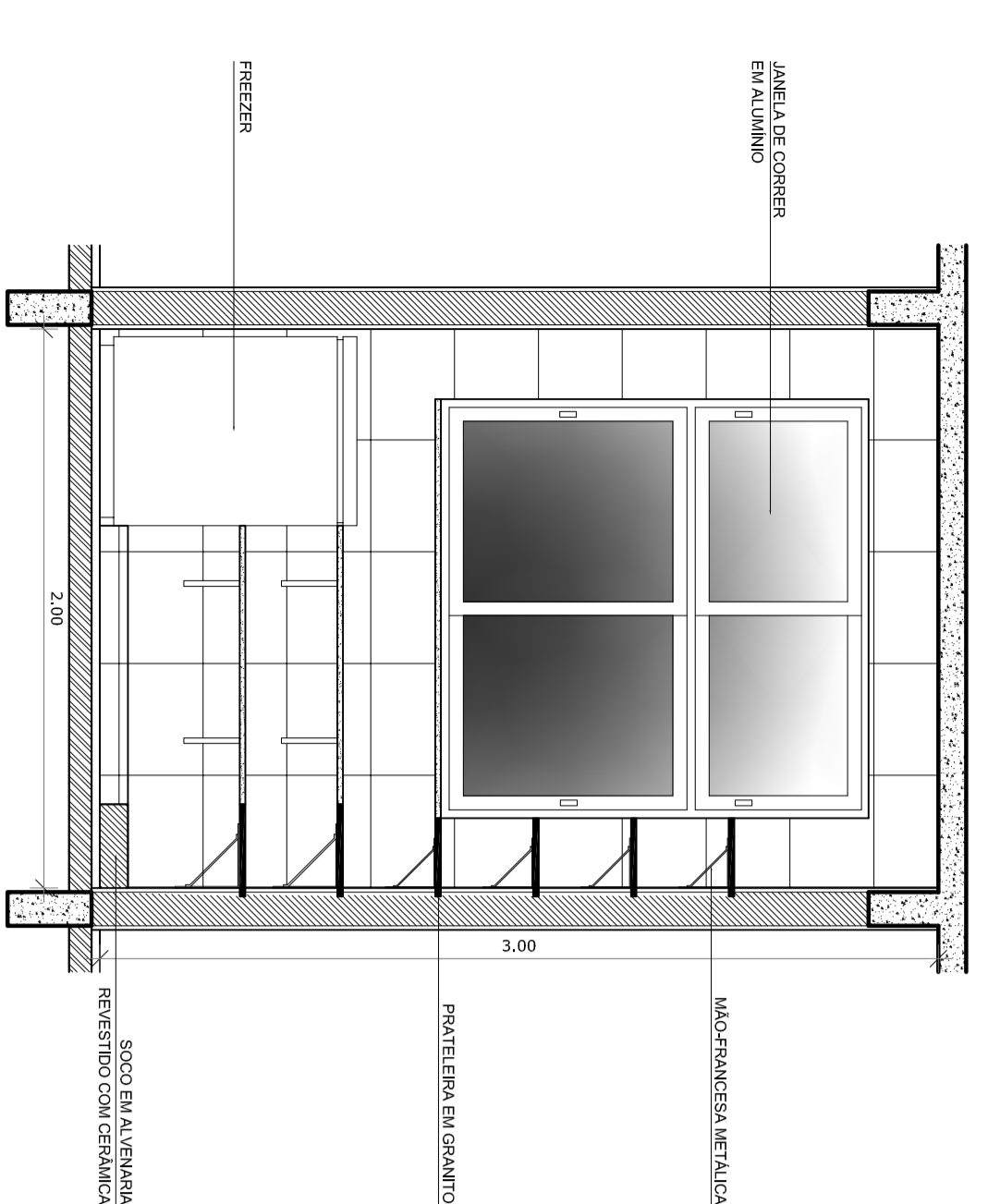


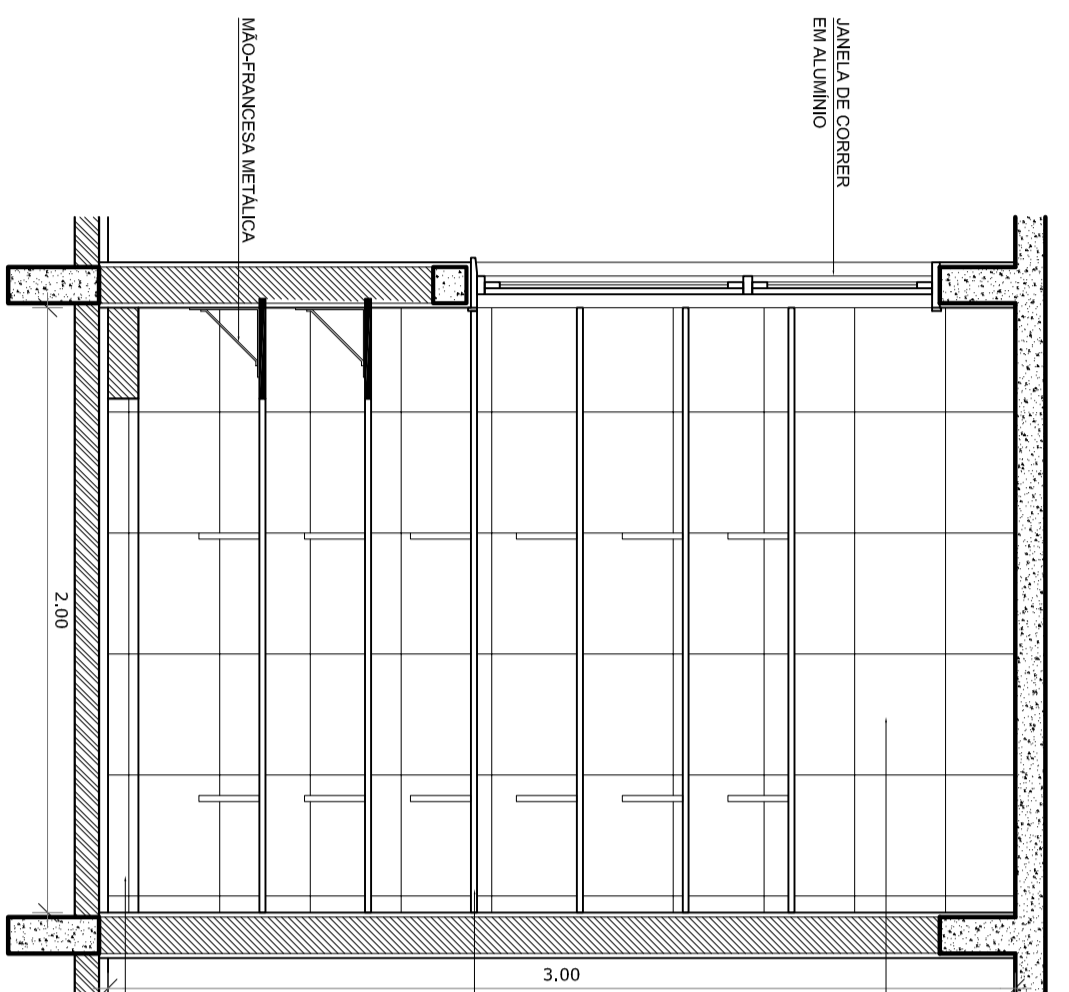
VISTA 1



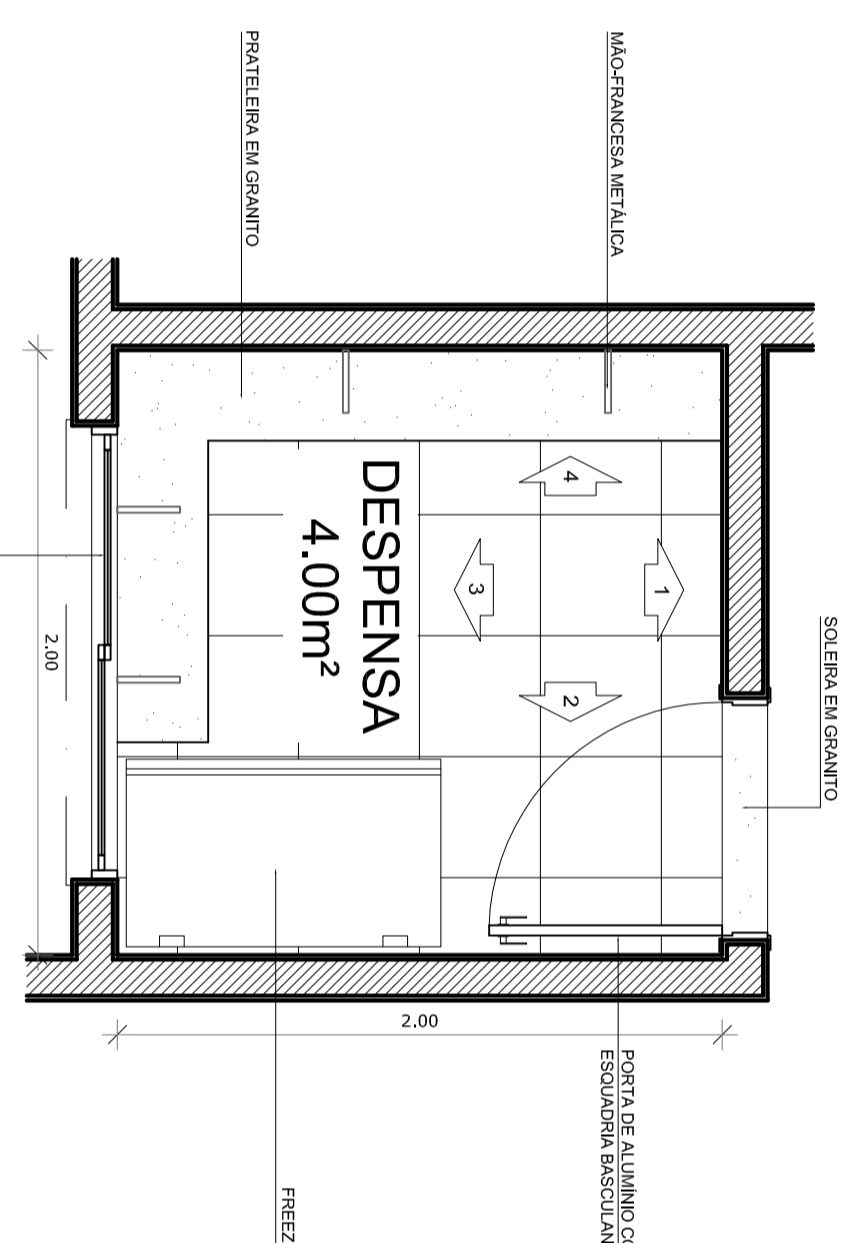
VISTA 2



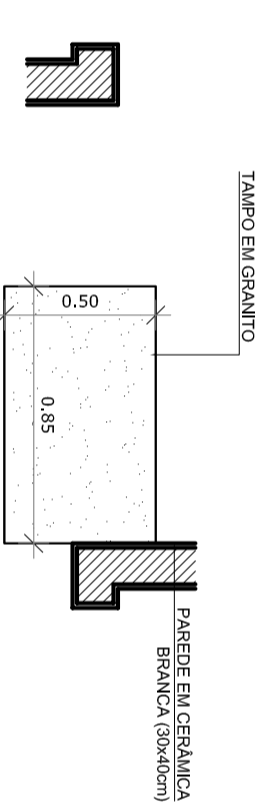
VISTA 3



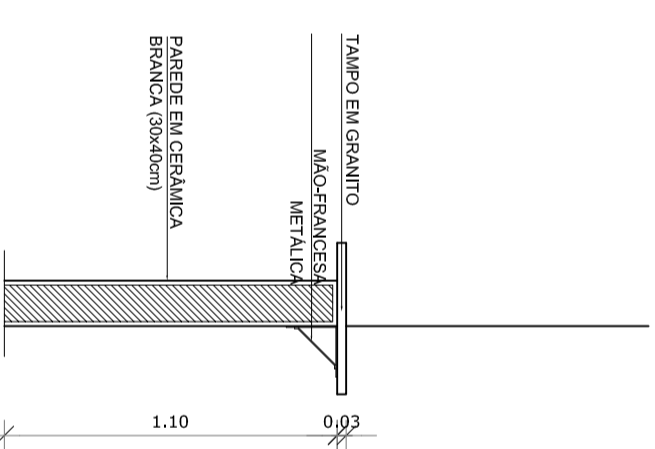
VISTA 4



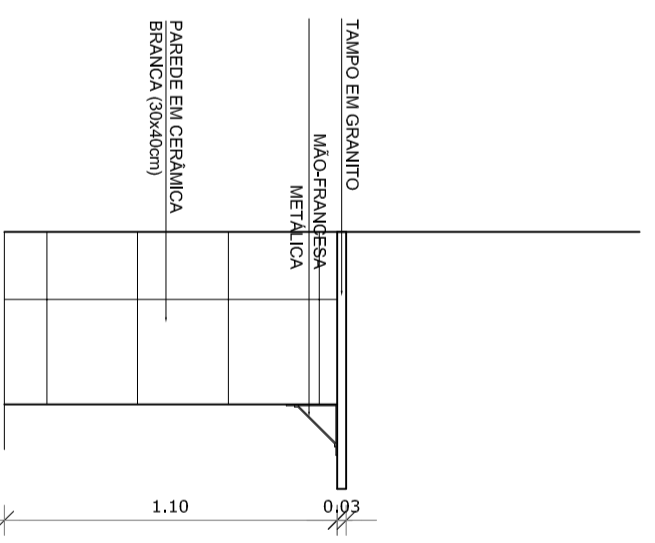
PLANTA BAIXA



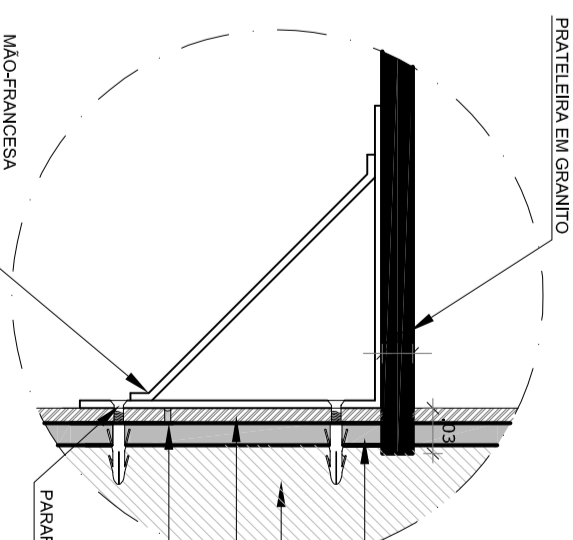
PLANTA BAIXA



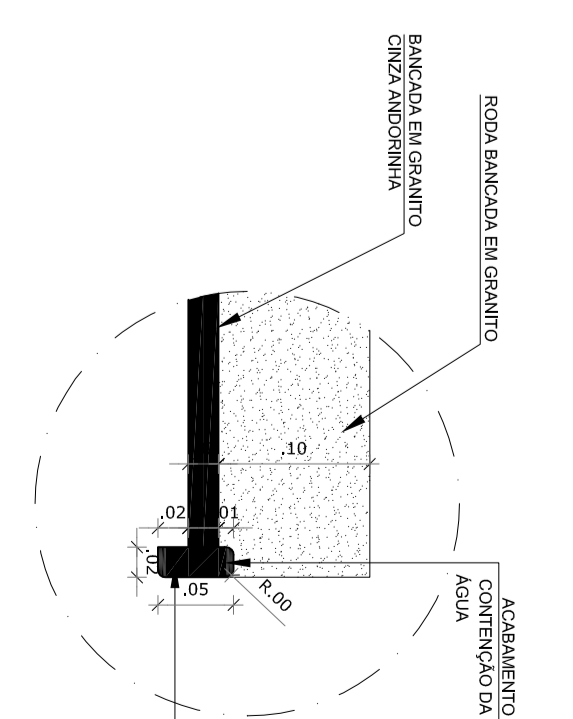
CORTE



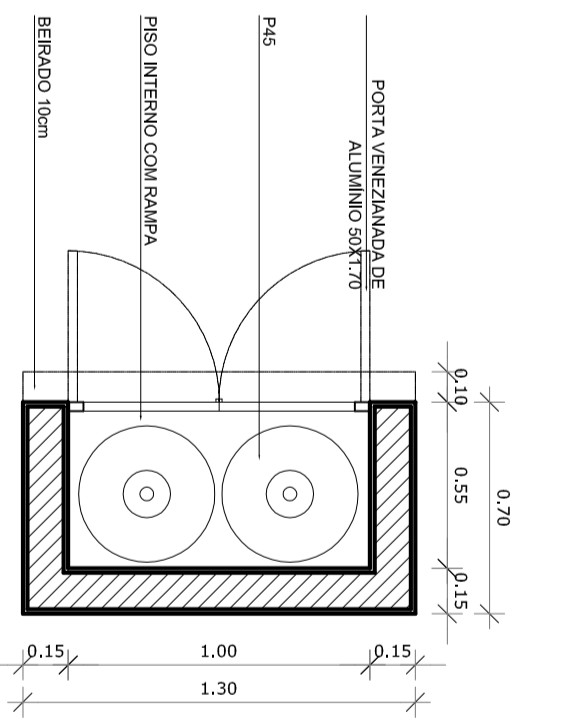
VISTA FRONTAL



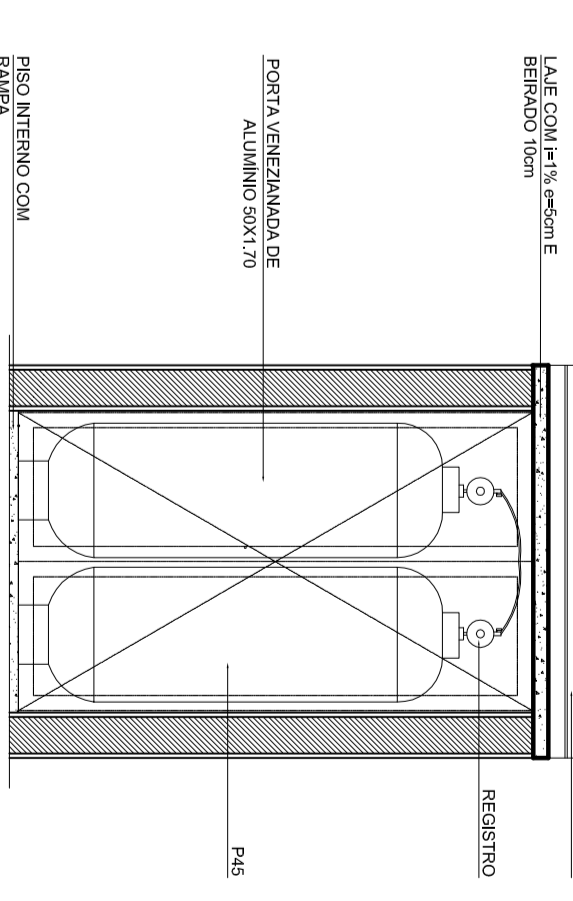
DETALHE PRATELEIRA DE GRANITO - ESC.: 1/5



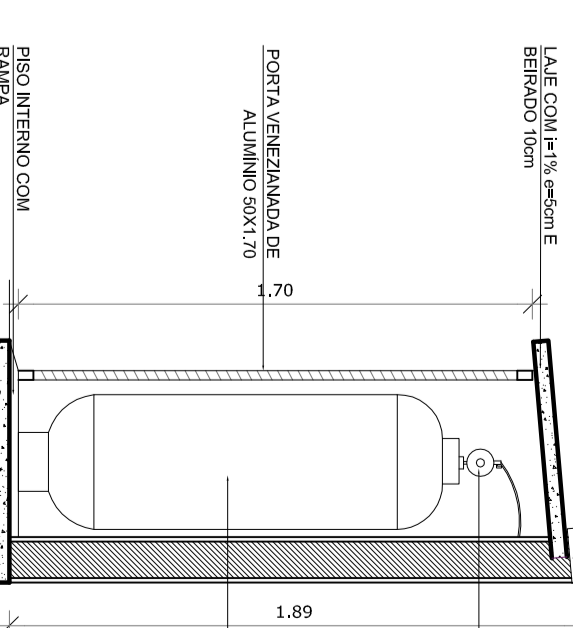
DETALHE BANCADA DE GRANITO - AREA MOLHADA - ESC.: 1/5



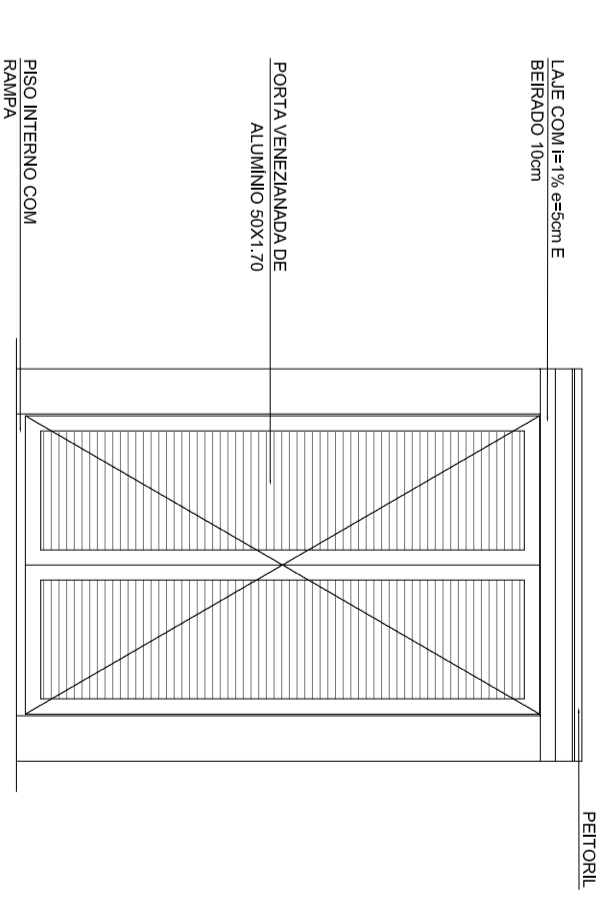
PLANTA BAIXA



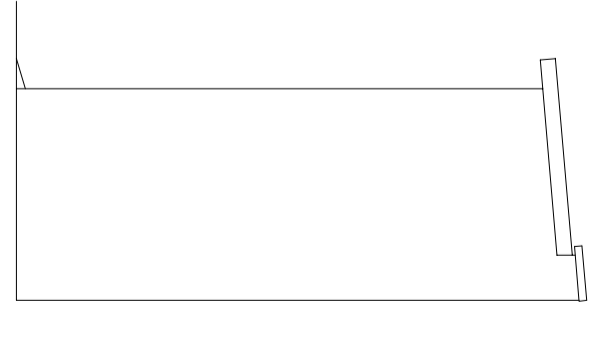
CORTE FRONTAL



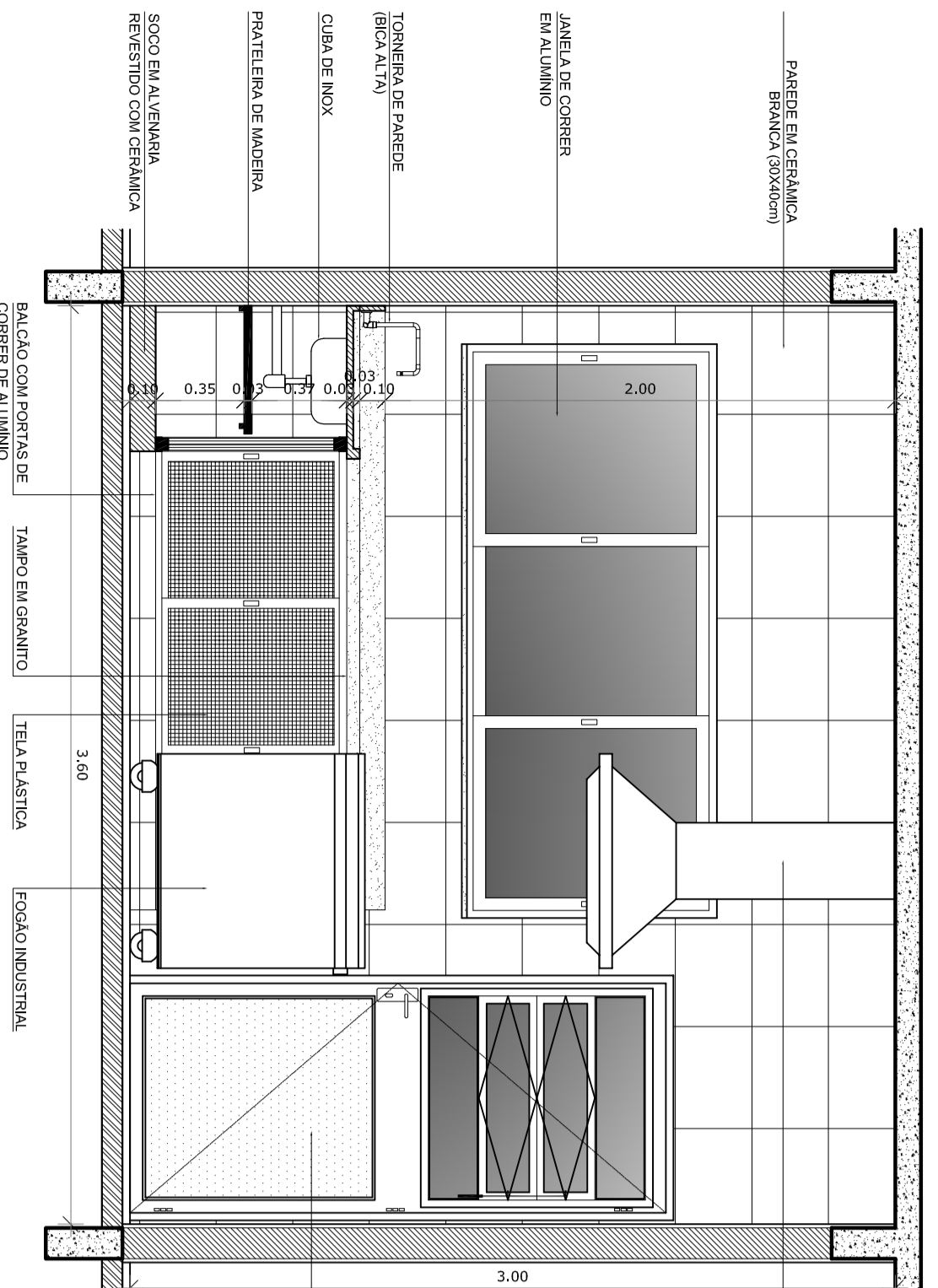
CORTE LATERAL



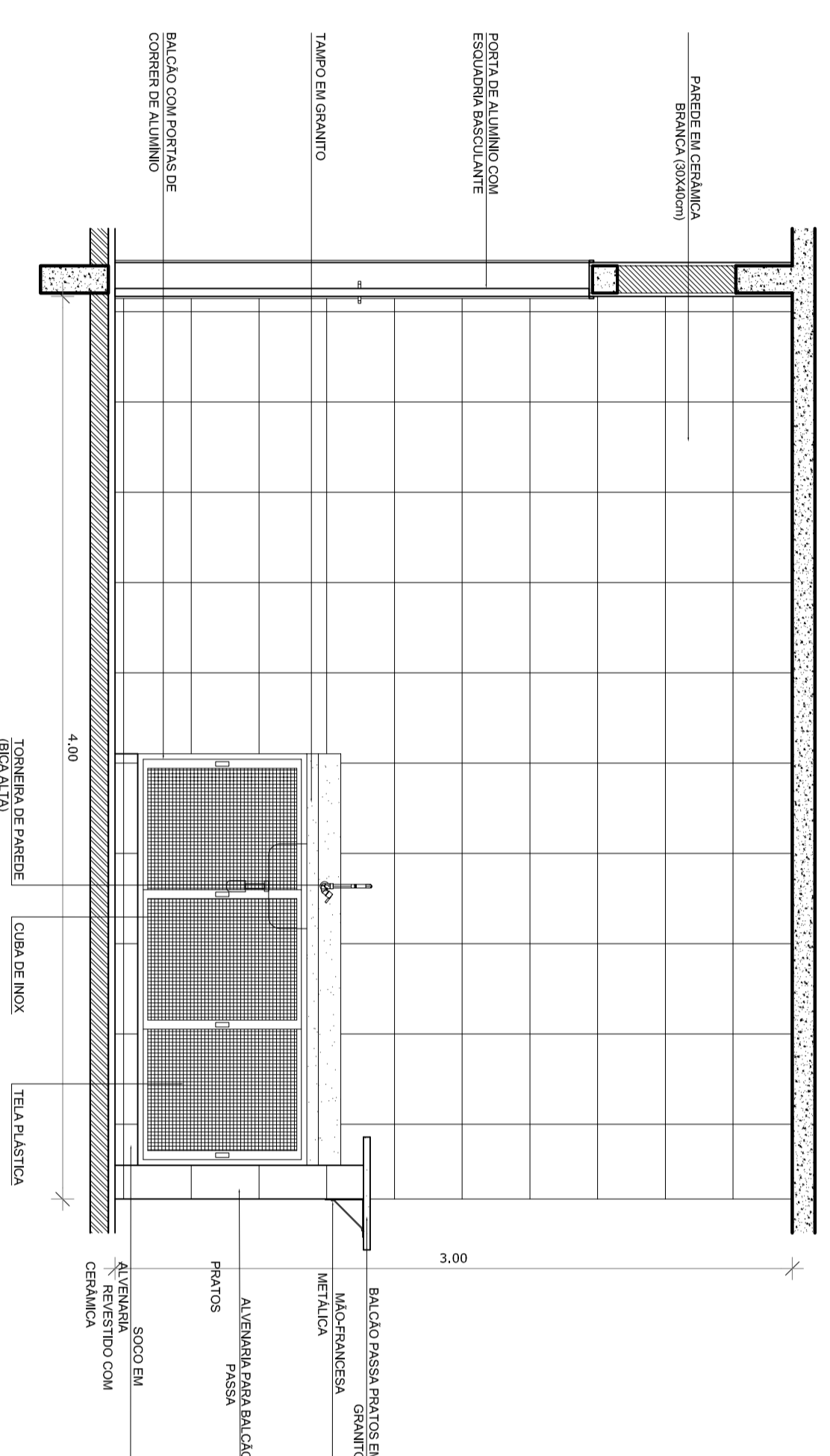
VISTA FRONTAL



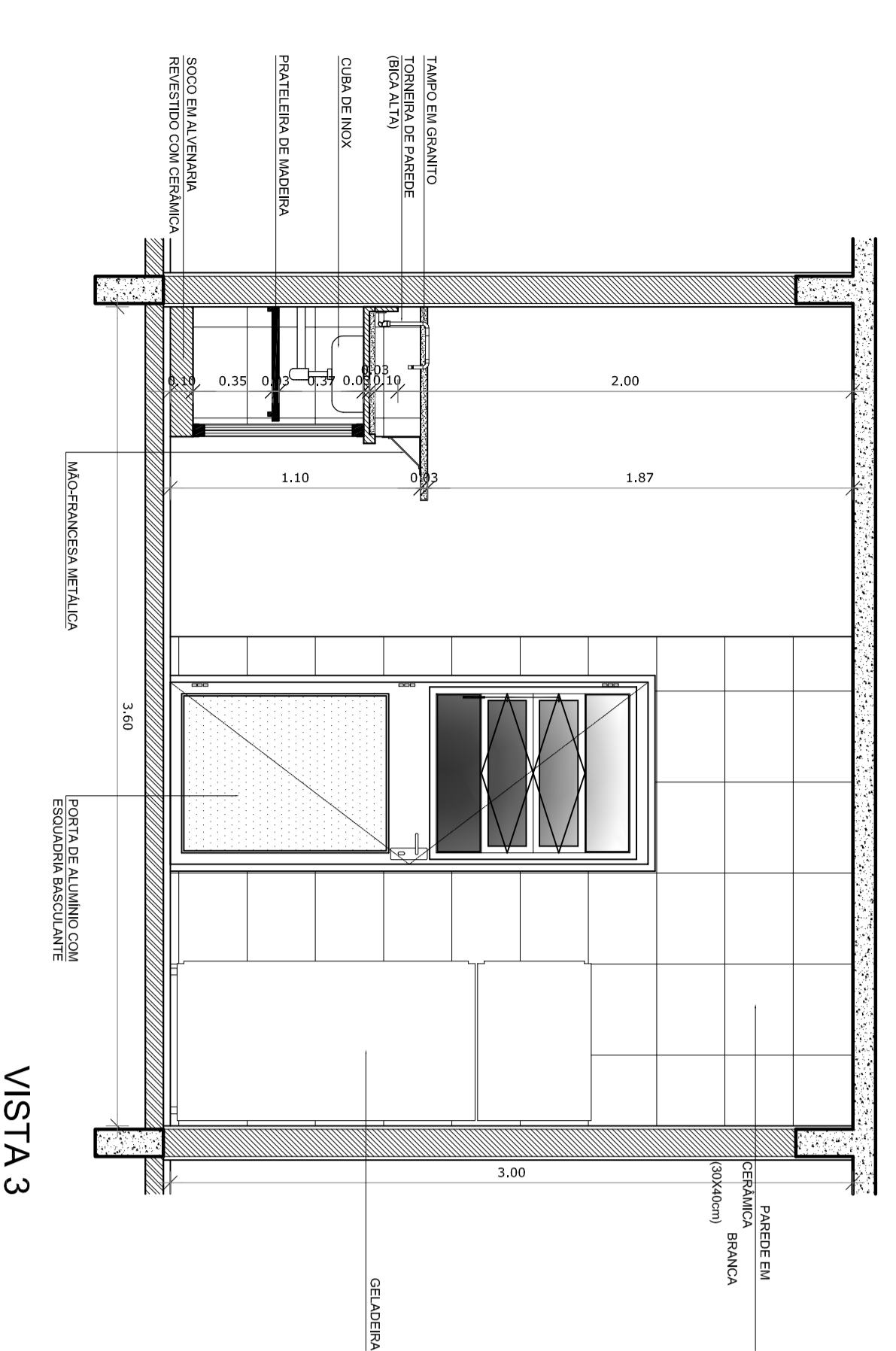
VISTA LATERAL



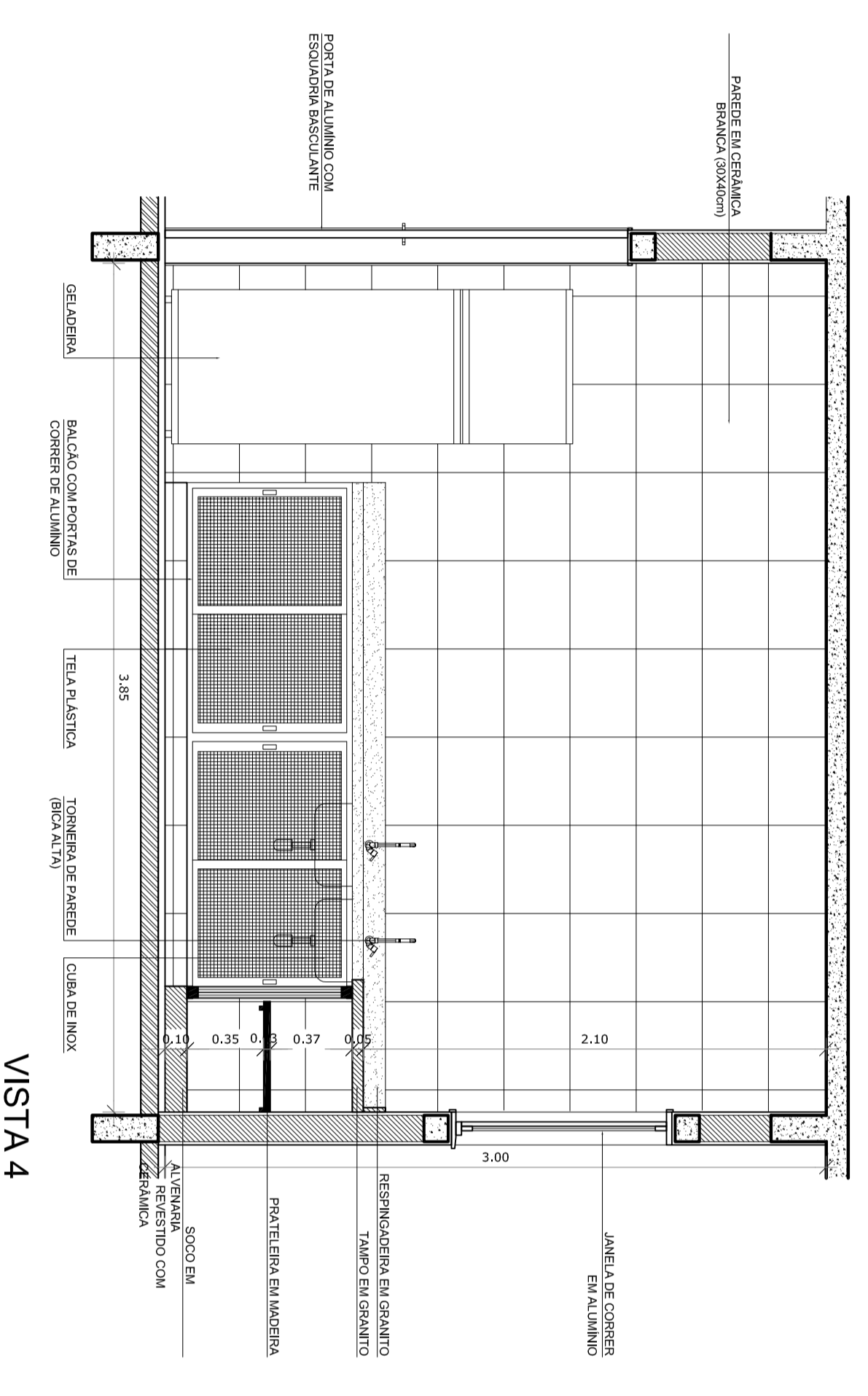
VISTA 1



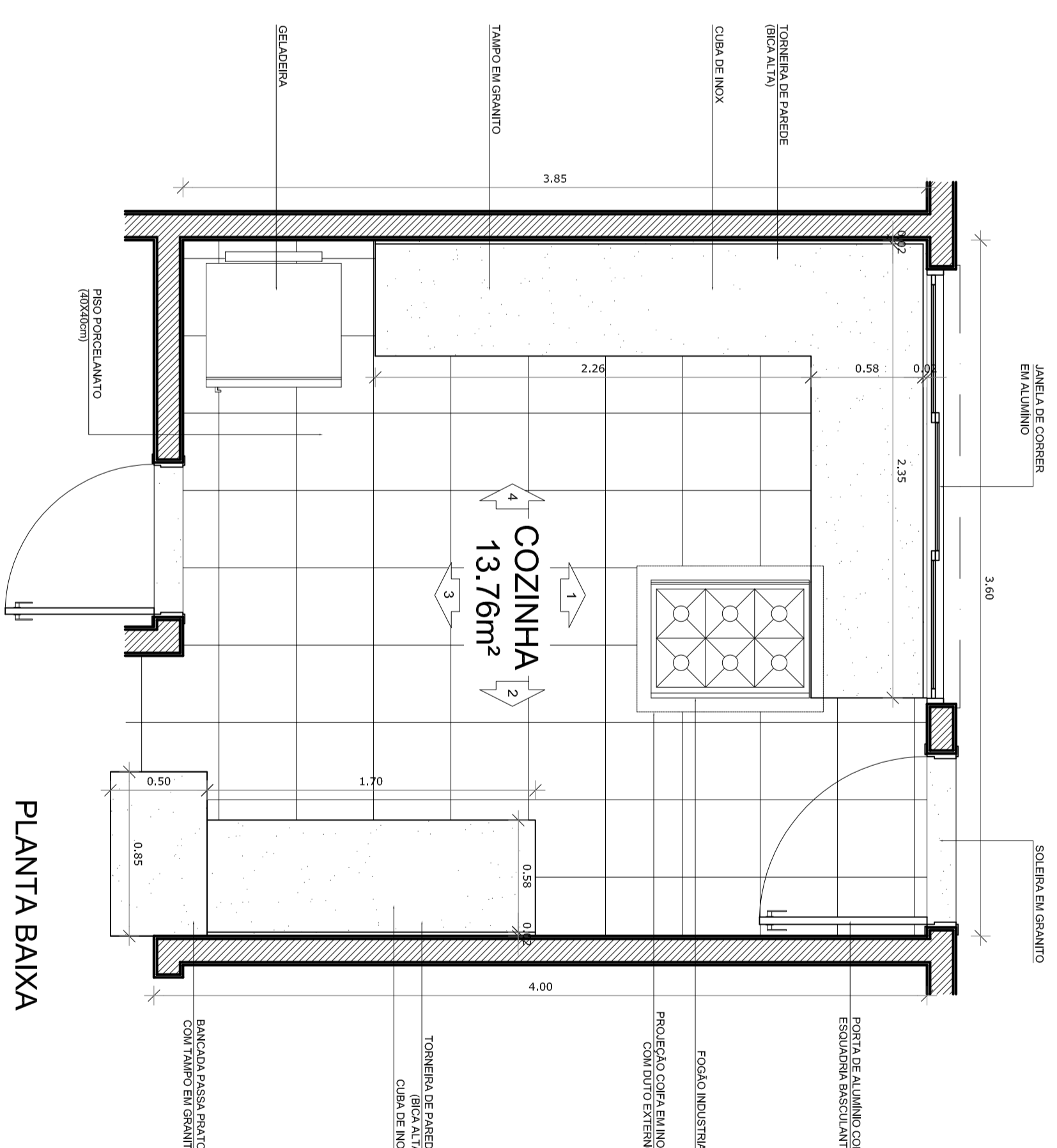
VISTA 2



VISTA 3



VISTA 4



PLANTA BAIXA

REVISÃO	DATA	RESPONSÁVEL	OBSERVAÇÃO

PREFETURA MUNICIPAL DE PELOTAS
DEPARTAMENTO DE PLANEJAMENTO E ENGENHARIA

EMEI ZOLA AMARO
SECRETARIA MUNICIPAL DA EDUCAÇÃO

Projeto Arquitetônico: Angela C. Borenscheker
CAU - AS14145

Coordenador do Projeto: Angeli C. Borenscheker
CAU - AS14145

PROJETO ARQUITETÔNICO

ENGENHEIRO: Rua Alexandre Mendonça, 408 - Colúzzo / Fregata
CONTATO: (51) 3033.7000
LOCAL E DATA: Pelotas, novembro de 2014

PA-05

ESCALA: 1/25