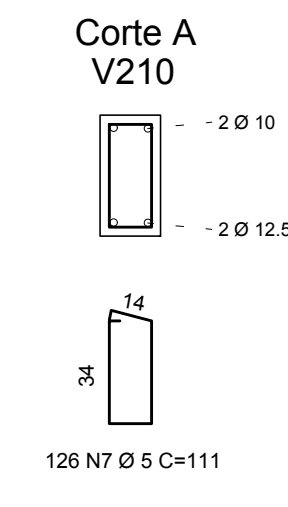
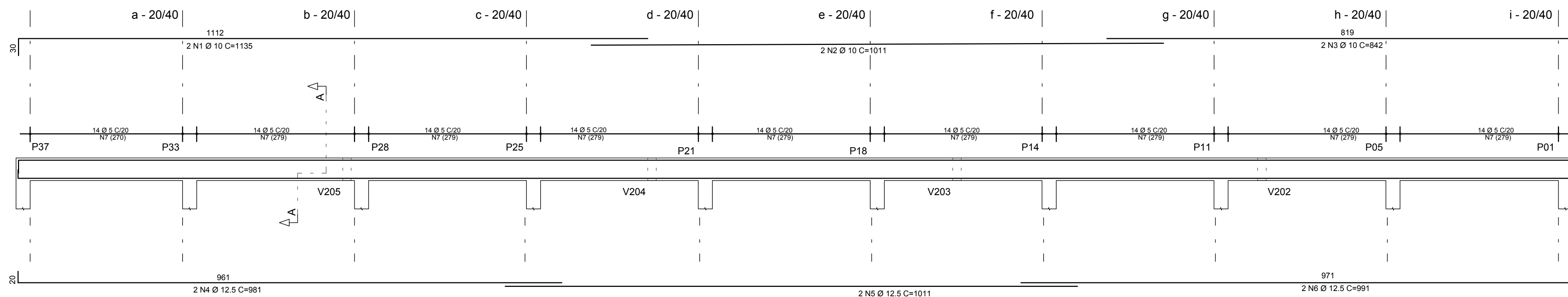


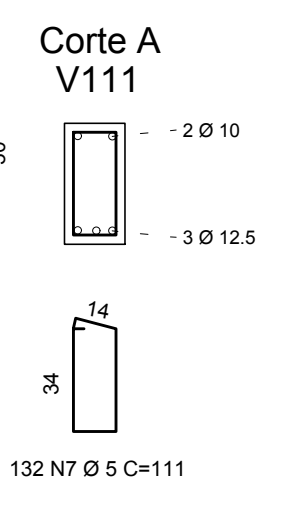
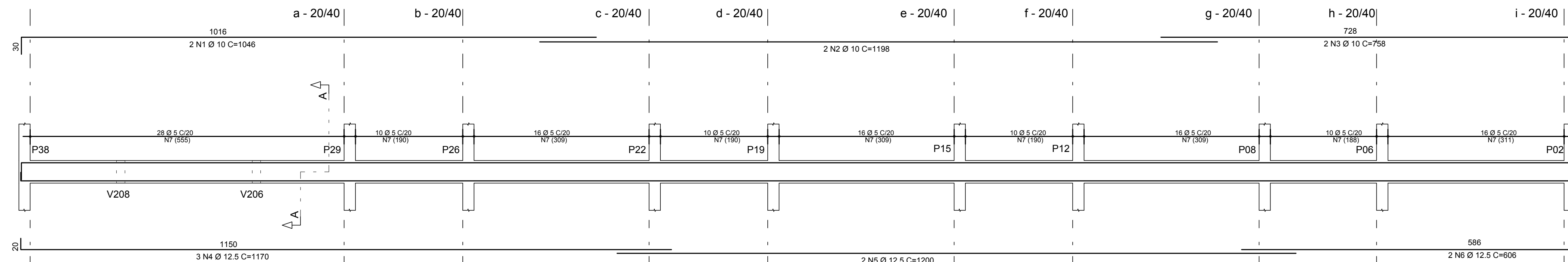
V210



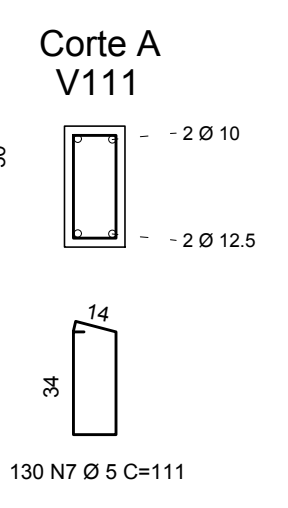
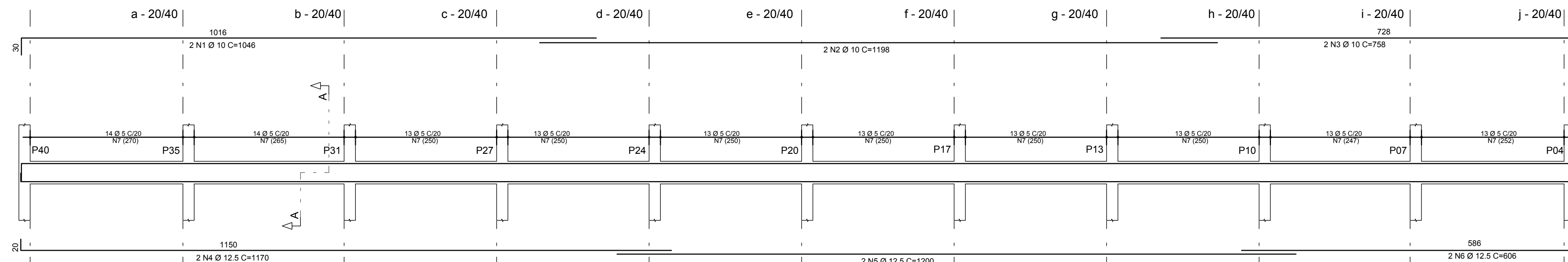
AÇO	POS	BIT (mm)	QUANT	COMPRIMENTO (cm)	TOTAL (cm)
V201=V209 (2x)					
50A	1	10	2	1034	4136
50A	2	12.5	2	1015	4060
60B	3	5	46	111	10212
V202=V203=V204=V205 (4x)					
50A	1	10	2	1034	8272
50A	2	12.5	2	1015	8120
60B	3	5	46	100	18400
V206=V208 (2x)					
50A	1	10	2	214	496
50A	2	12.5	2	197	788
60B	3	5	7	100	1400
V207					
50A	1	10	2	738	1476
50A	2	12.5	2	722	1444
60B	3	5	32	100	3200
V210					
50A	1	10	2	1135	2270
50A	2	10	2	1011	2022
50A	3	10	2	842	1684
50A	4	12.5	2	981	1962
50A	5	12.5	2	1011	4044
50A	6	12.5	2	991	1982
60B	7	5	126	111	13986
V211					
50A	1	10	2	1046	2092
50A	2	10	2	1198	2396
50A	3	10	2	758	1516
50A	4	12.5	3	1170	2340
50A	5	12.5	2	1200	2400
50A	6	12.5	2	606	1212
60B	7	5	132	111	14652
V212					
50A	1	10	2	307	614
50A	2	12.5	2	287	574
60B	3	5	11	111	1221
V213					
50A	1	10	2	1046	2092
50A	2	10	2	1198	2396
50A	3	10	2	758	1516
50A	4	12.5	2	1170	2340
50A	5	12.5	2	1200	2400
50A	6	12.5	2	606	1212
60B	7	5	130	111	14430

RESUMO AÇO CA 50-60			
AÇO	BIT (mm)	COMPR (m)	PESO (kg)
60B	5	853	132
50A	10	363	224
50A	12.5	384	365
Peso Total 60B =			132 kg
Peso Total 50A =			589 kg

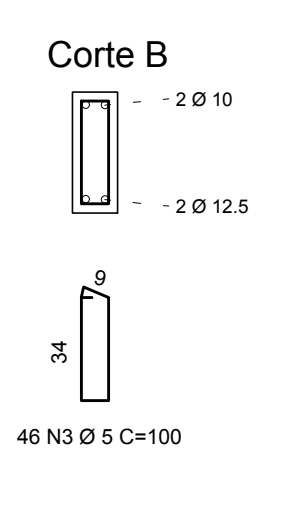
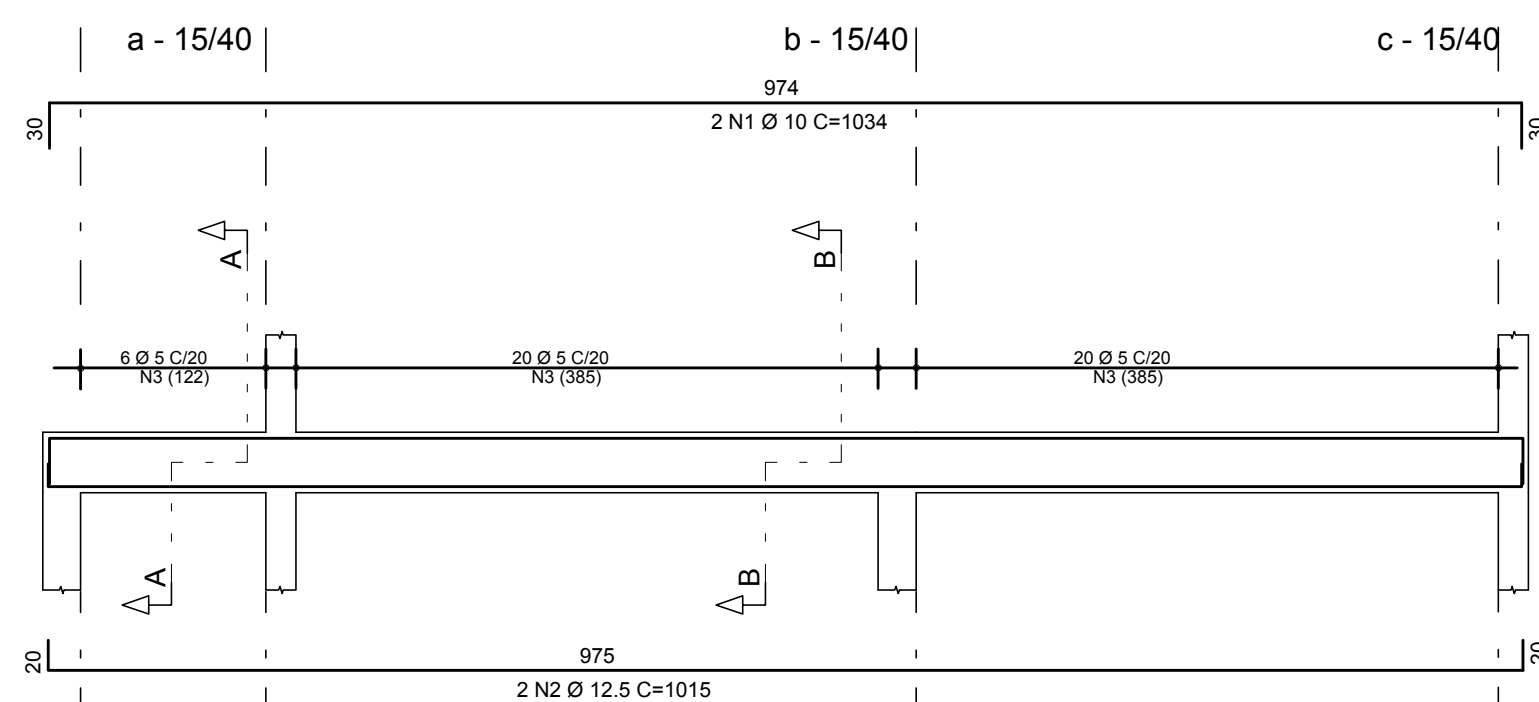
V211



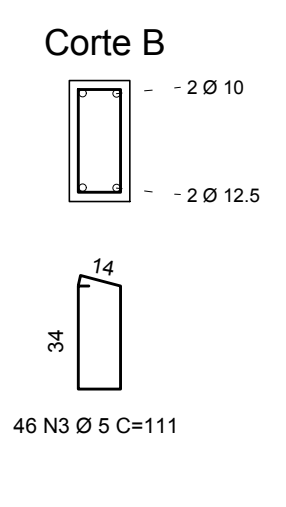
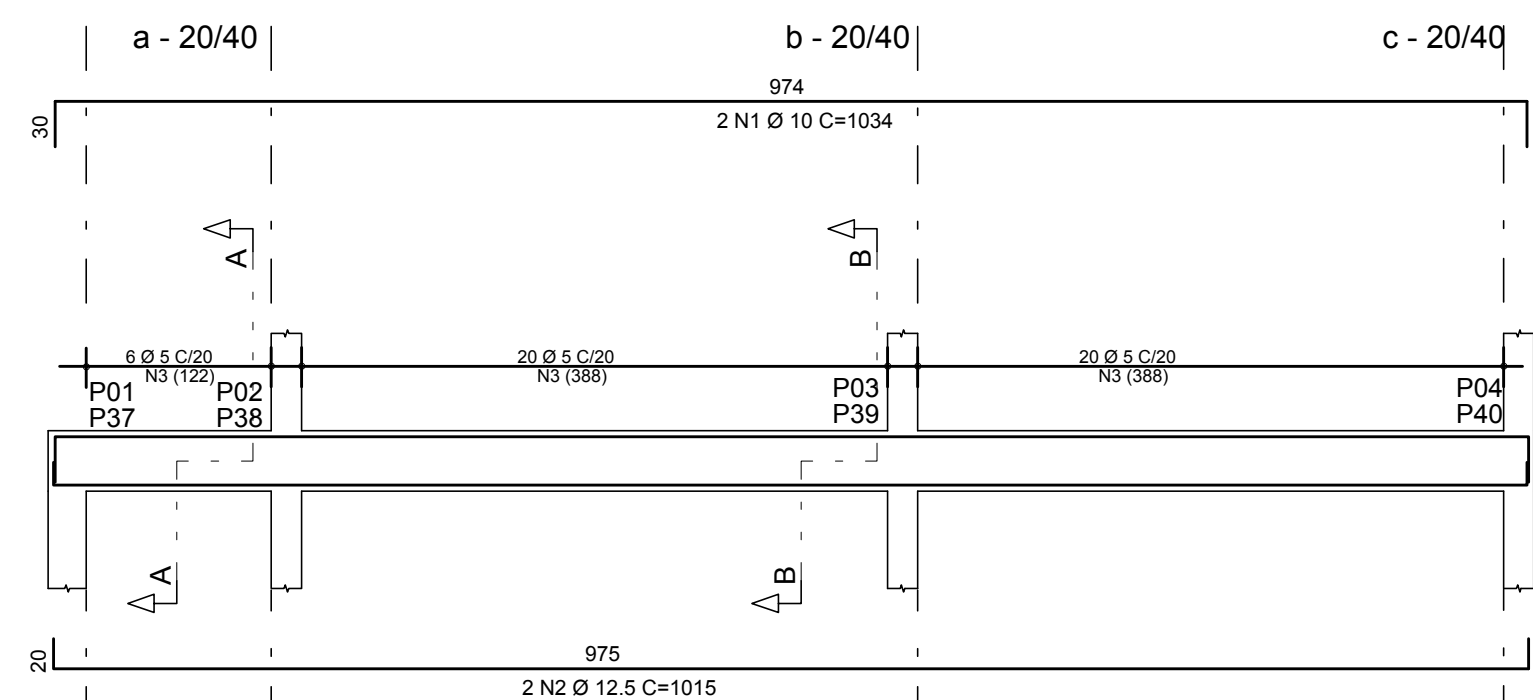
V213



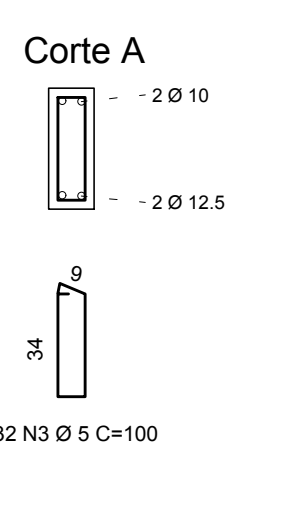
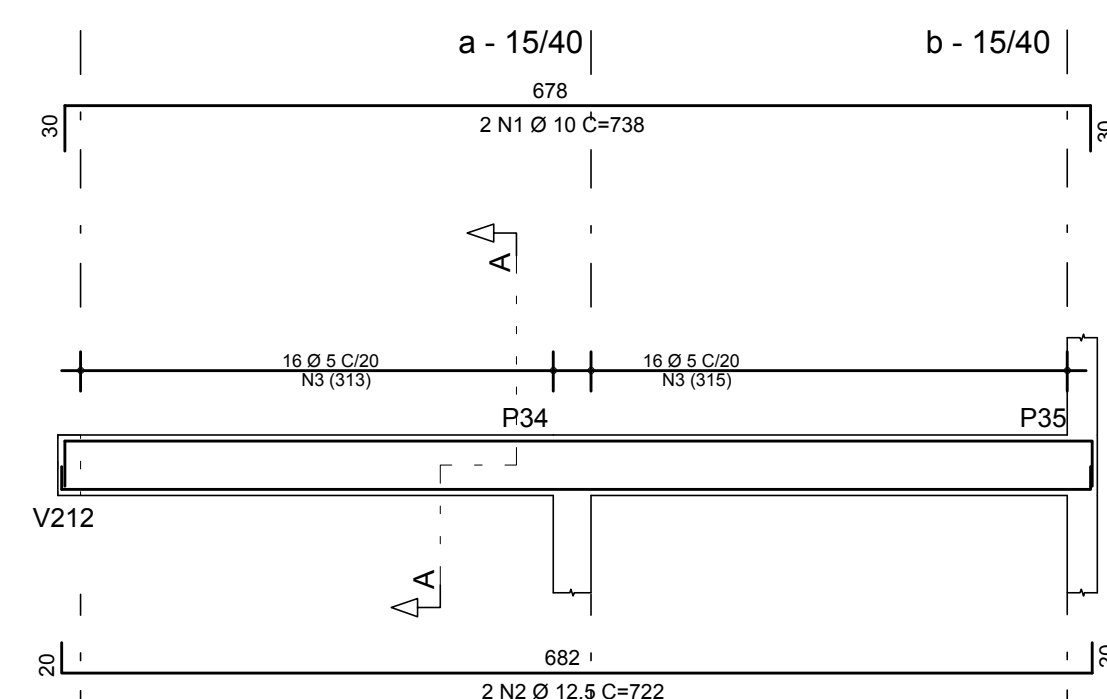
V202=V203=V204=V205



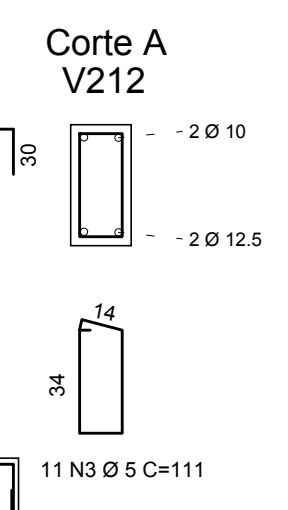
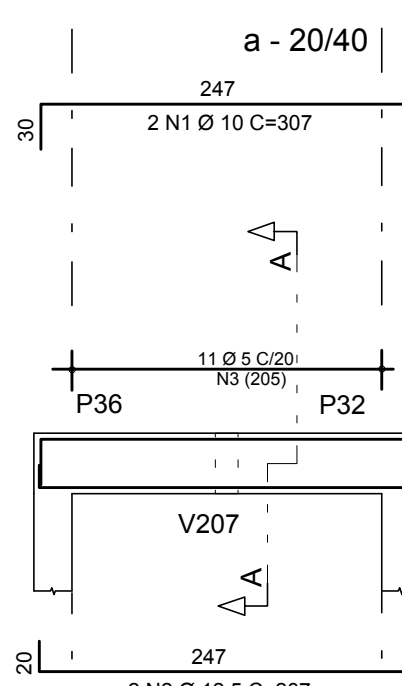
V201=V209



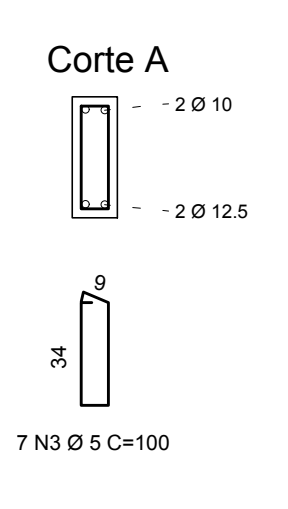
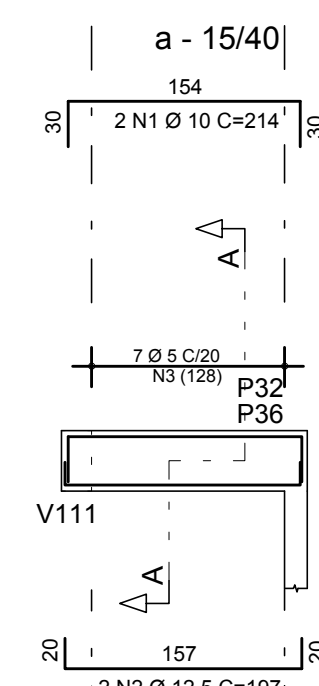
V207




V212



V206=V208



Notas:
Medidas em cm
Classe de Agressividade Ambiental II
Resistência Característica à Compressão do Concreto - fck: 25 MPa
Cobertura das Lajes: 2.5 cm
Cobertura das Vigas: 3 cm
Cobertura dos Pilares: 3 cm
Fator Água Cimento < 0,6



SECRETARIA DE EDUCAÇÃO E DESPORTO

E.M.E.F. INDEPENDÊNCIA

SECRETÁRIO MUNICIPAL DA EDUCAÇÃO

PROJETO: **Departamento de Engenharia**

Eq. Técnica: Arq. Adriane S. Gonçalves
 Praça 20 de Setembro, 366
 Pelotas - RS - CEP 96015-280
 FONE: (53)3284-2618
 e-mail: dpnsmed@gmail.com

Arq. Olga M. Almeida da Silva
 Arq. Tâmara Cunha
 Arq. Luciana C. Garcia
 Eng. Civil José Henrique C. Cordeiro

RESPONSÁVEL TÉCNICO: _____

PROJETO: Ampliação e Reforma - E. M. E. F. INDEPENDÊNCIA	PRANCHA:
ENDEREÇO: Rua Paulo Aci Teixeira, 535, Lot. Sítio Floresta - Três Vendas	09/09
CONTEÚDO: Projeto Estrutural 06/06	
LOCAL E DATA: Pelotas, Novembro de 2017.	ESCALA: INDICADA