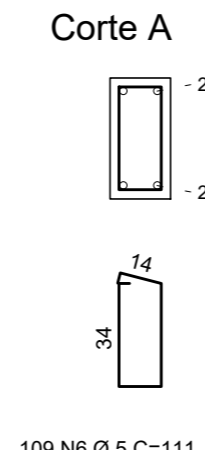
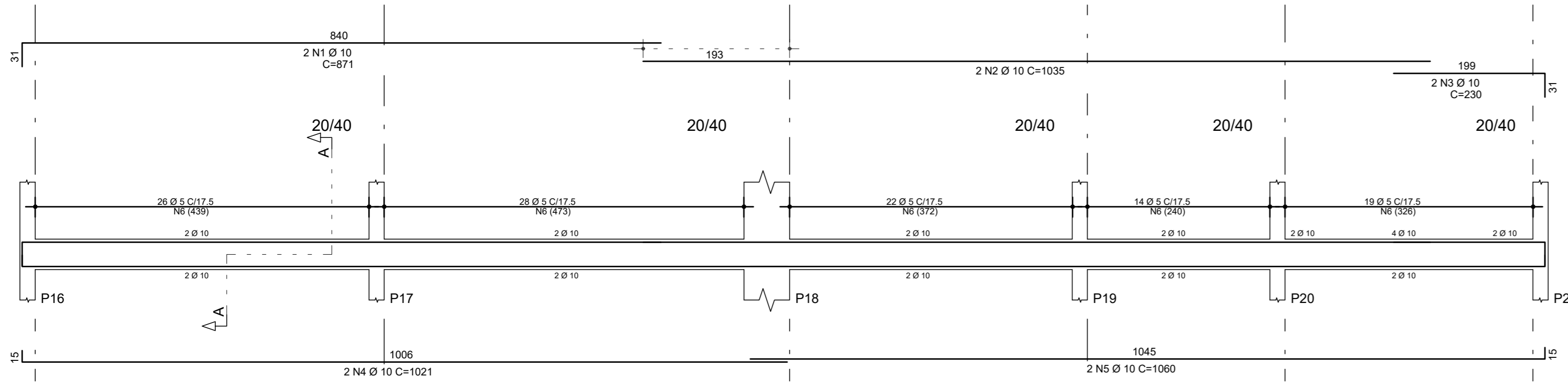
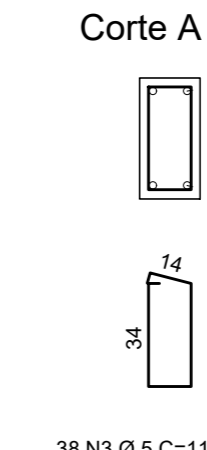
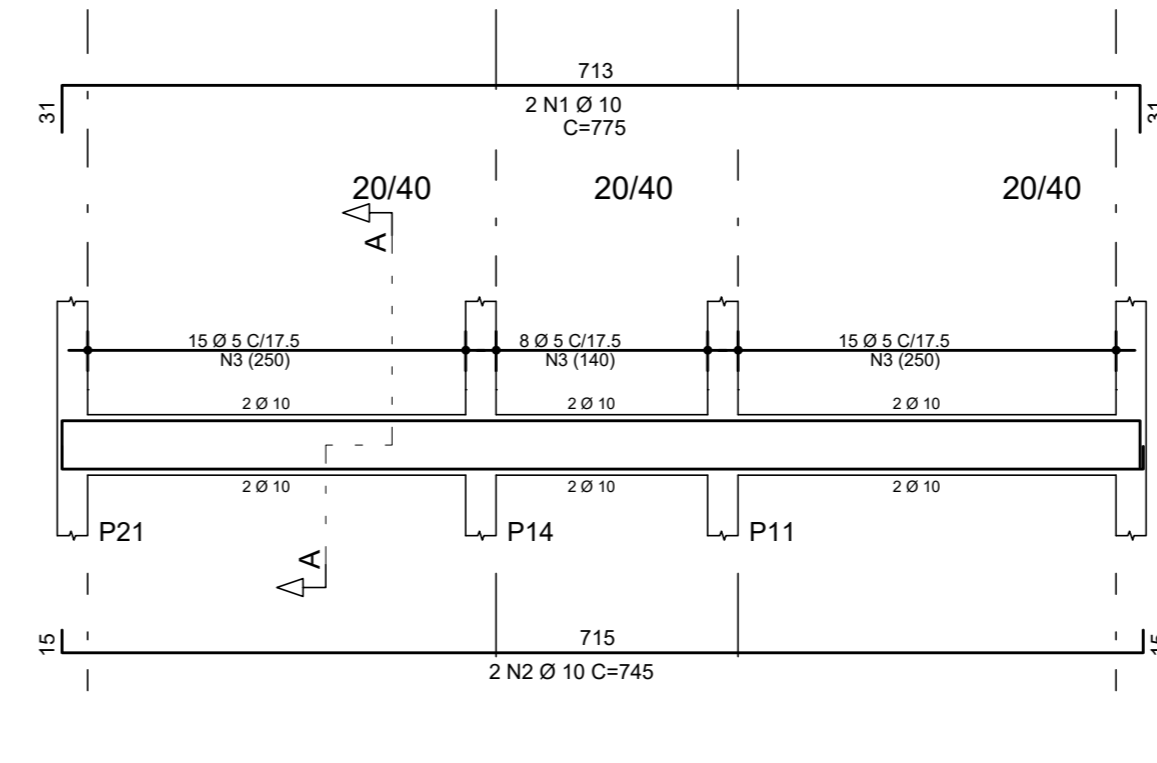


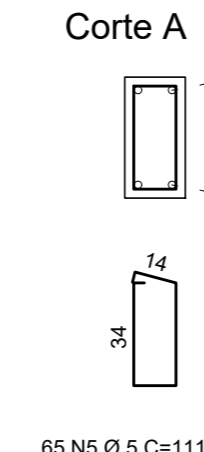
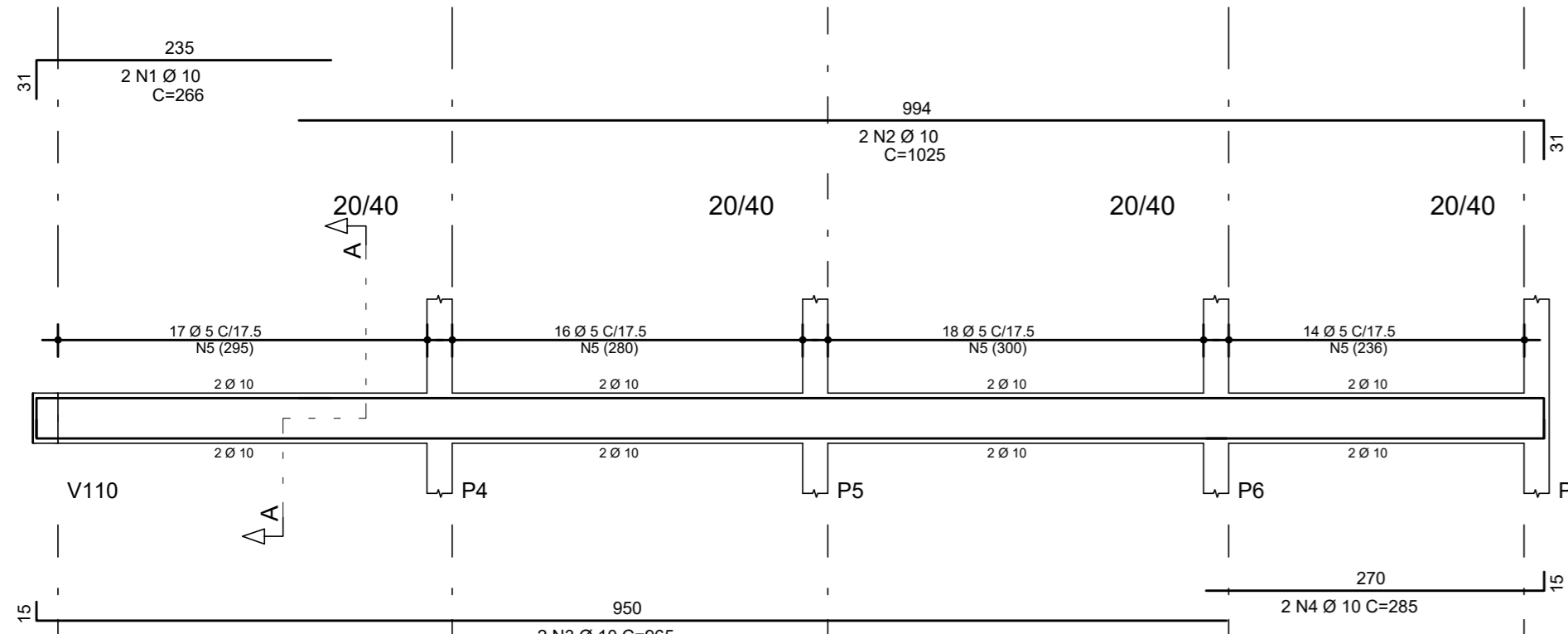
V106



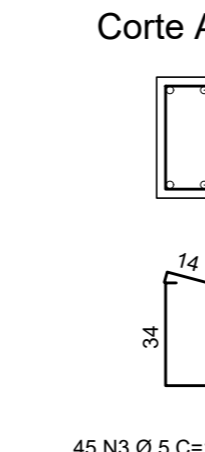
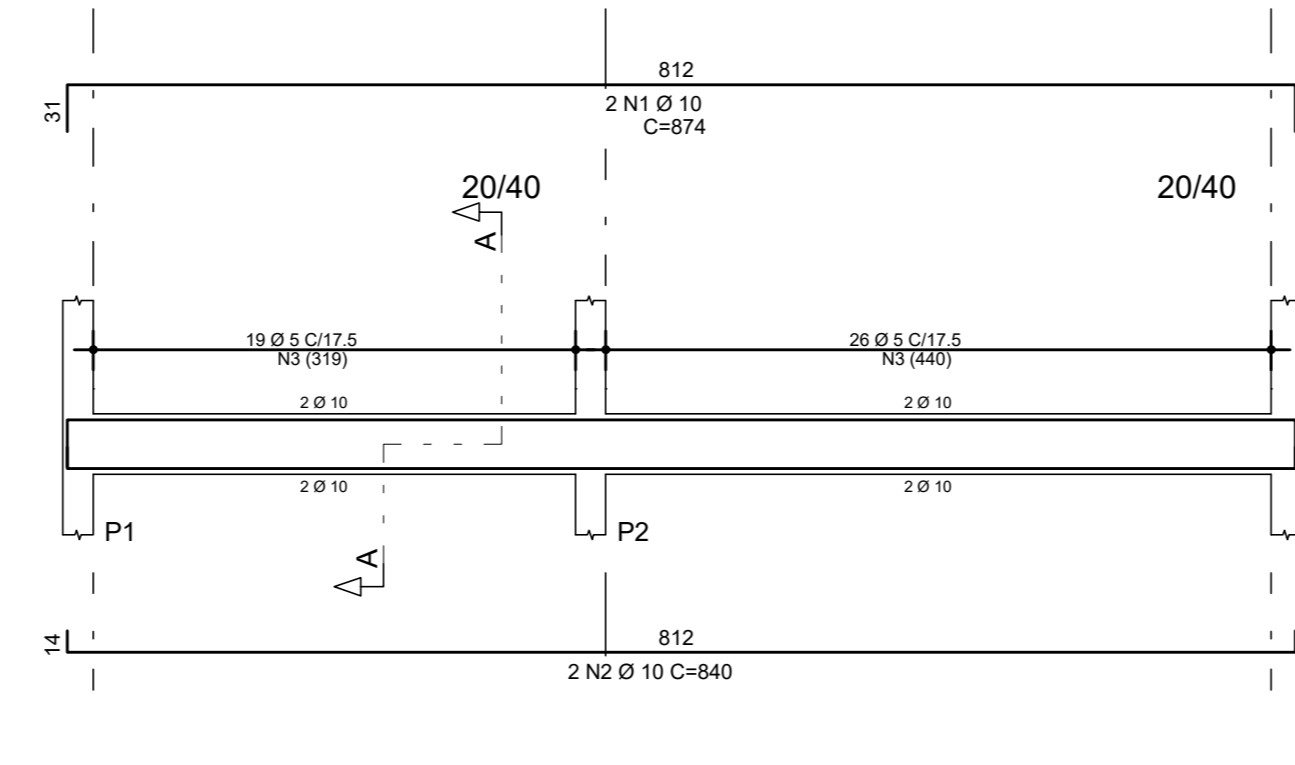
V112



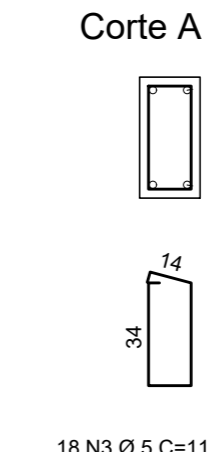
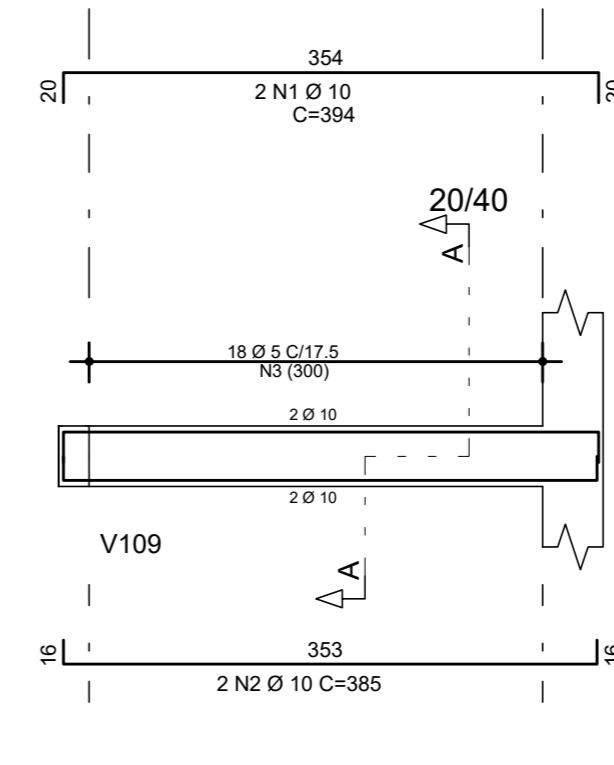
V102



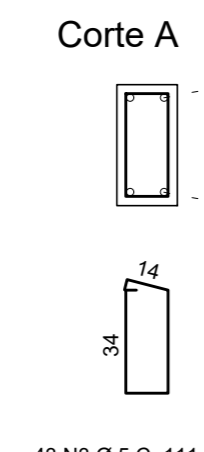
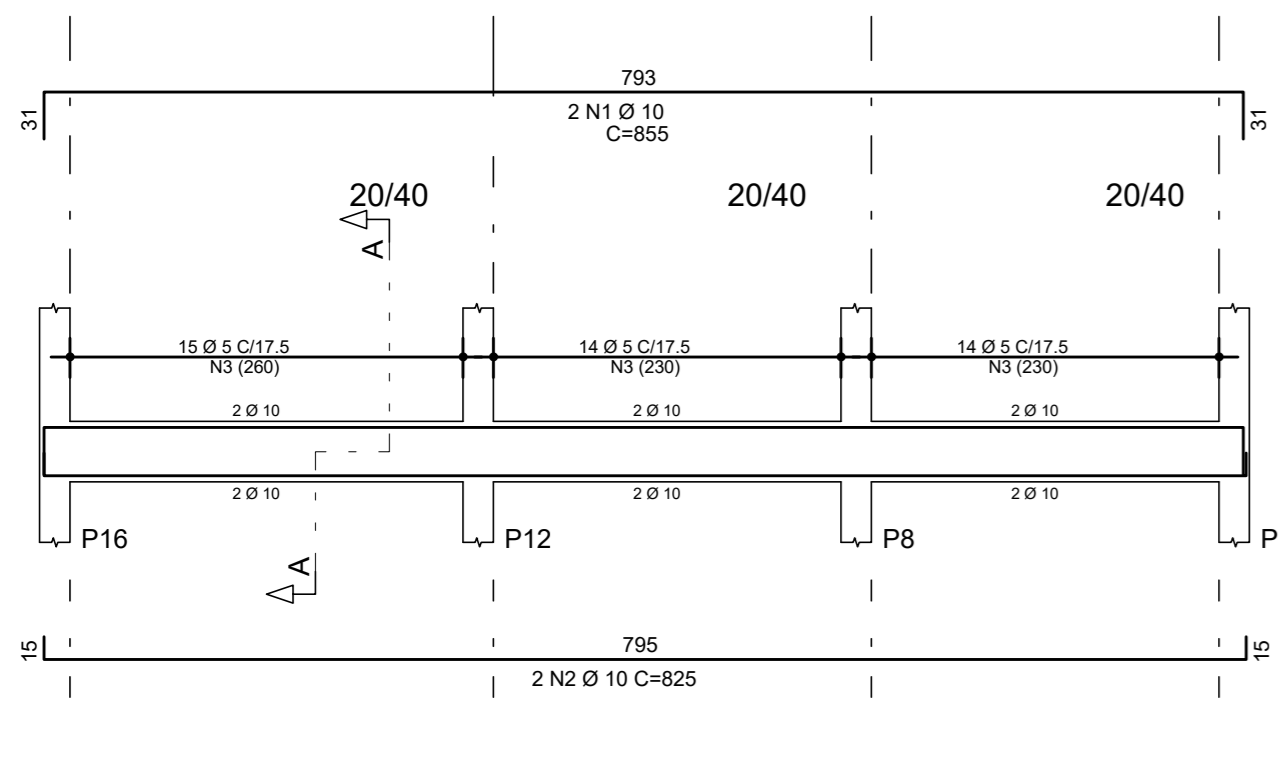
V101



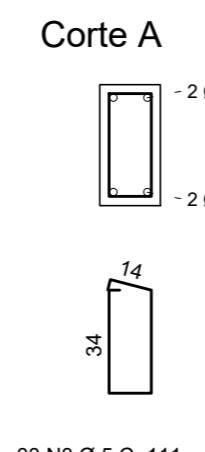
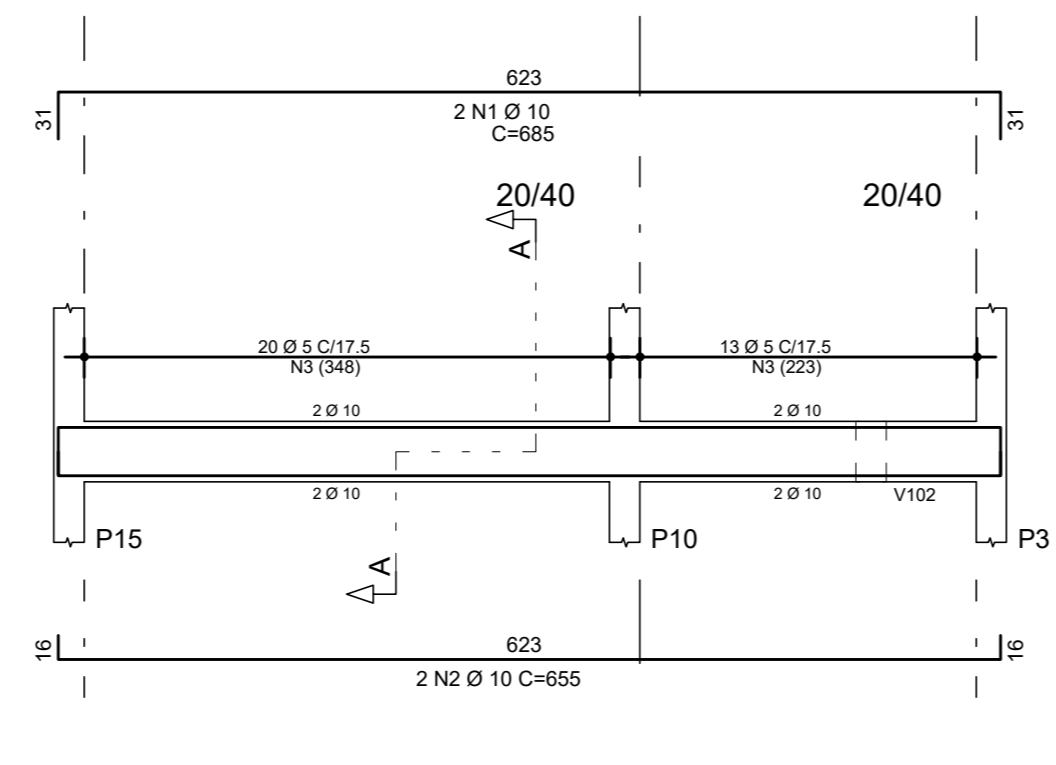
V105



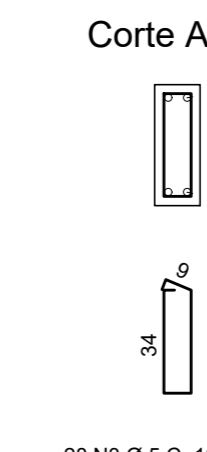
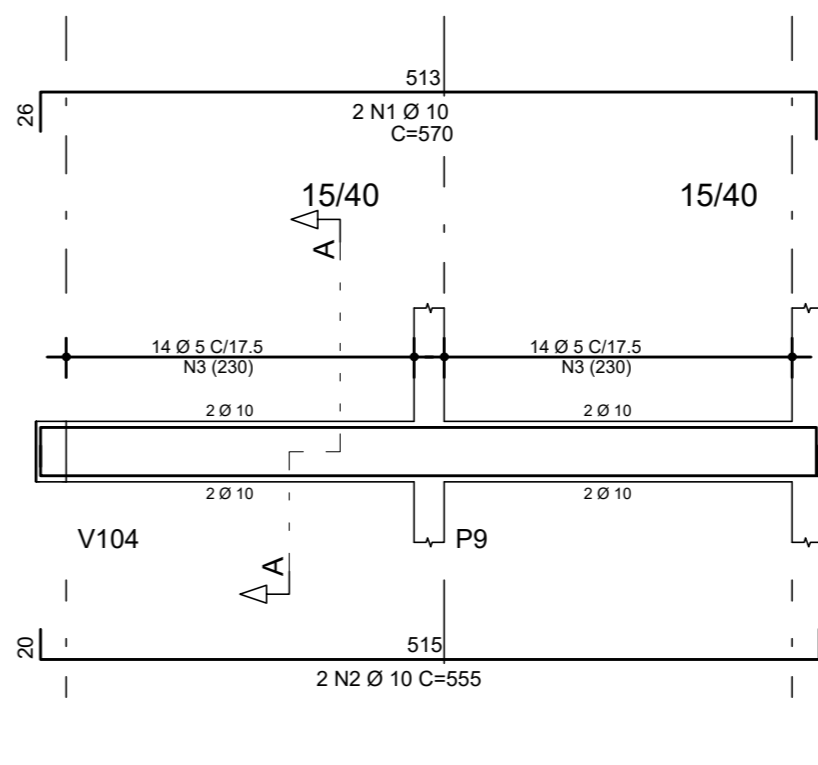
V107



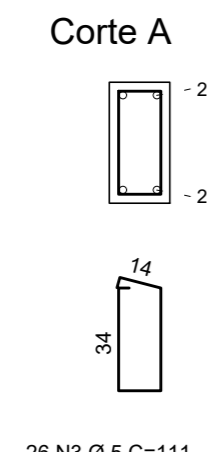
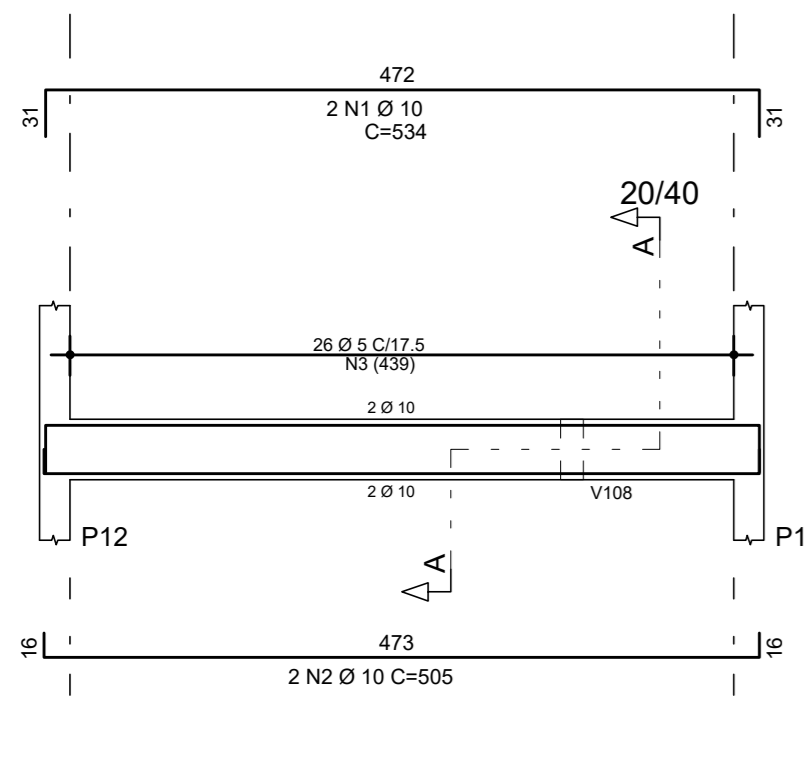
V110



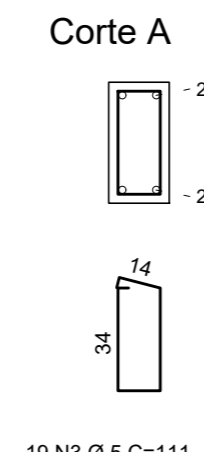
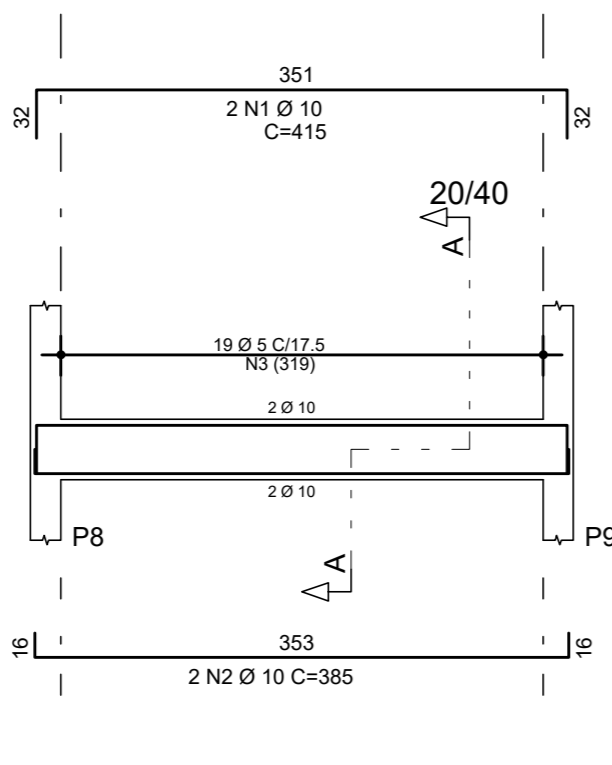
V108



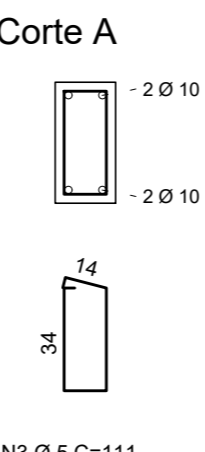
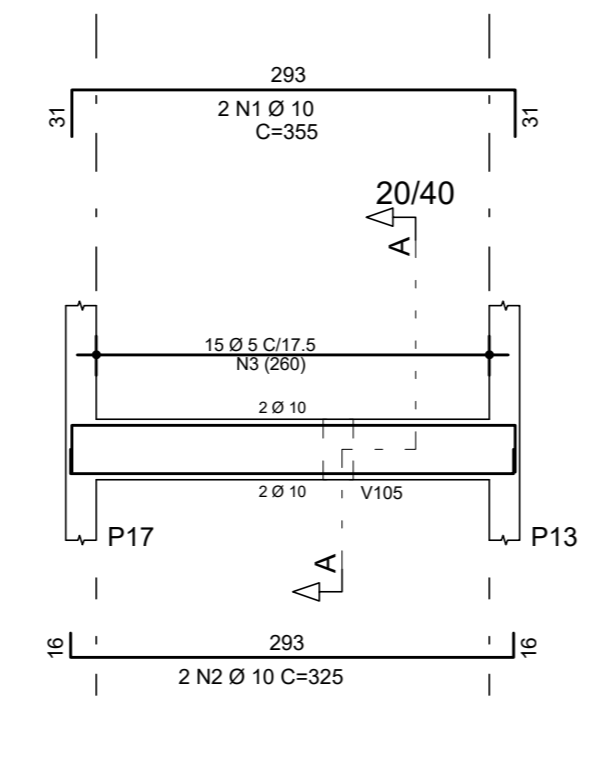
V104



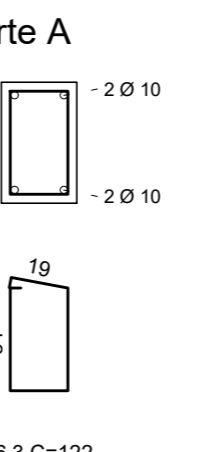
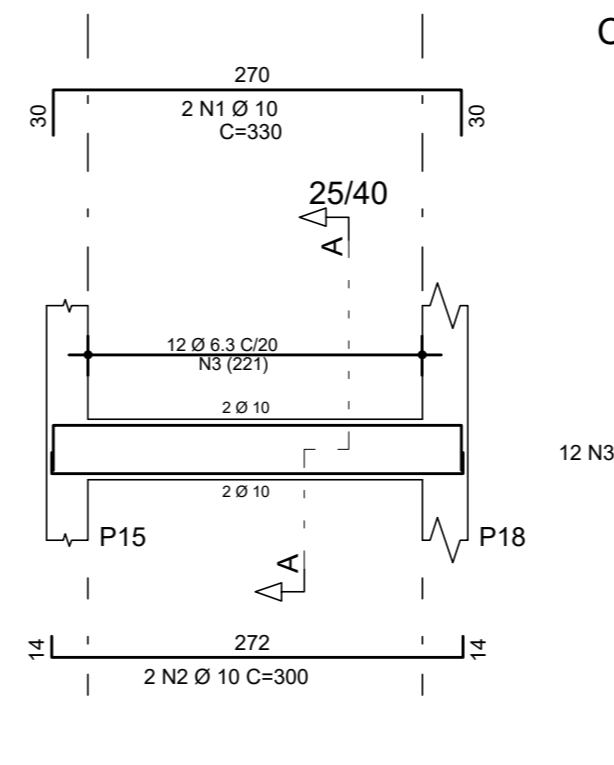
V103



V109



V111



AÇO	POS	BIT (mm)	QUANT	COMPRIMENTO	
				UNIT (cm)	TOTAL (cm)
<b>V101</b>					
50A	1	10	2	874	1748
50A	2	10	2	840	1680
60B	3	5	45	111	4995
<b>V102</b>					
50A	1	10	2	266	532
50A	2	10	2	1025	2050
50A	3	10	2	965	1930
50A	4	10	2	285	570
60B	5	5	65	111	7215
<b>V103</b>					
50A	1	10	2	415	830
50A	2	10	2	385	770
60B	3	5	19	111	2109
<b>V104</b>					
50A	1	10	2	534	1068
50A	2	10	2	505	1010
60B	3	5	26	111	2886
<b>V105</b>					
50A	1	10	2	394	788
50A	2	10	2	385	770
60B	3	5	18	111	1998
<b>V106</b>					
50A	1	10	2	871	1742
50A	2	10	2	1035	2070
50A	3	10	2	230	460
50A	4	10	2	1021	2042
50A	5	10	2	1060	2120
60B	6	5	109	111	12099
<b>V107</b>					
50A	1	10	2	855	1710
50A	2	10	2	825	1650
60B	3	5	43	111	4773
<b>V108</b>					
50A	1	10	2	570	1140
50A	2	10	2	555	1110
60B	3	5	28	101	2828
<b>V109</b>					
50A	1	10	2	355	710
50A	2	10	2	325	650
60B	3	5	15	111	1665
<b>V110</b>					
50A	1	10	2	685	1370
50A	2	10	2	655	1310
60B	3	5	33	111	3663
<b>V111</b>					
50A	1	10	2	330	660
50A	2	10	2	300	600
50A	3	6.3	12	122	1464
<b>V112</b>					
50A	1	10	2	775	1550
50A	2	10	2	745	1490
60B	3	5	38	111	4218

RESUMO AÇO CA 50-60			
AÇO	BIT (mm)	COMPR (m)	PESO (kg)
60B	5	484	75
50A	6.3	15	4
50A	10	361	223
Peso Total 60B =			75 kg
Peso Total 50A =			227 kg

Notas:  
 Medidas em cm  
 Classe de Agressividade Ambiental II  
 Cobrimento Vigas: 3cm  
 Cobrimento Pilares: 3 cm  
 Cobrimento Lajes: 2,5 cm  
 Cobrimento Fundações: 5 cm  
 Resistência Característica à Compressão do Concreto - f<sub>ck</sub> > 25 MPa  
 Fator Água Cimento < 0,6



**E.M.E.F. FREDERICO OZANAN**

SECRETÁRIO MUNICIPAL DA EDUCAÇÃO

PROJETO: **Departamento de Engenharia**

PRACA 20 DE SETEMBRO, 366  
 PELOTAS - RS - CEP 96015-280  
 FONE:(53)3284-2618  
 e-mail:dpensmed@gmail.com

Eq. Técnica: Arq. Louise Winke  
 Arq. Luciana C. Garcia  
 Arq. Tamara Cunha  
 Eng. Civil Nison R. Almeida Aguiar  
 Eng. Civil José Henrique C. Cordeiro  
 Apoio Técnico: Guacira Dias Vieira  
 Moisés Vieira dos Santos  
 Samuel Carvalho  
 Roger Silveira  
 Edilson da Rocha Almeida

RESPONSÁVEL TÉCNICO

PROJETO: Estrutural	PRANCHA: <b>05/10</b>
ENDEREÇO: Rua Zeferino Costa, s/n - Três Vendas, Pelotas/RS	
CONTEÚDO: VIGAS - TÉRREO	
LOCAL E DATA: Pelotas, DEZEMBRO de 2020.	ESCALA: 1:50