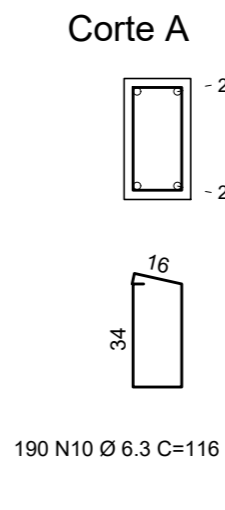
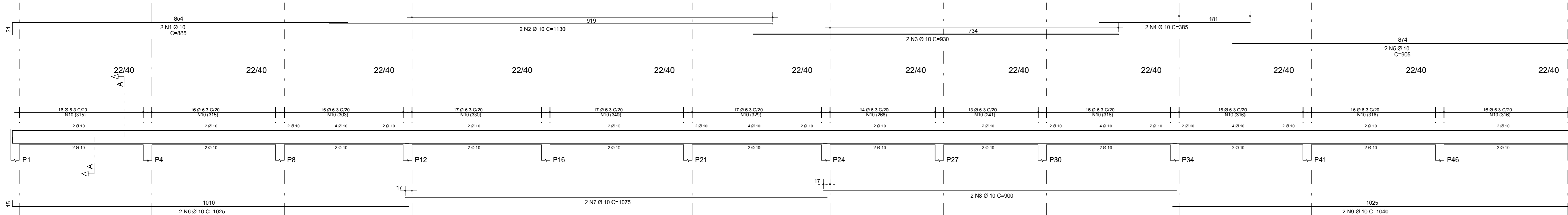
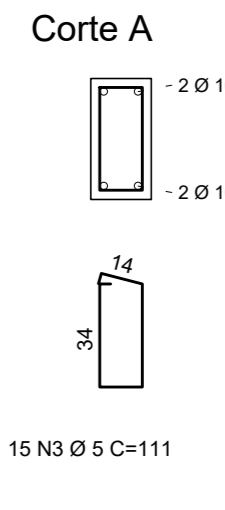
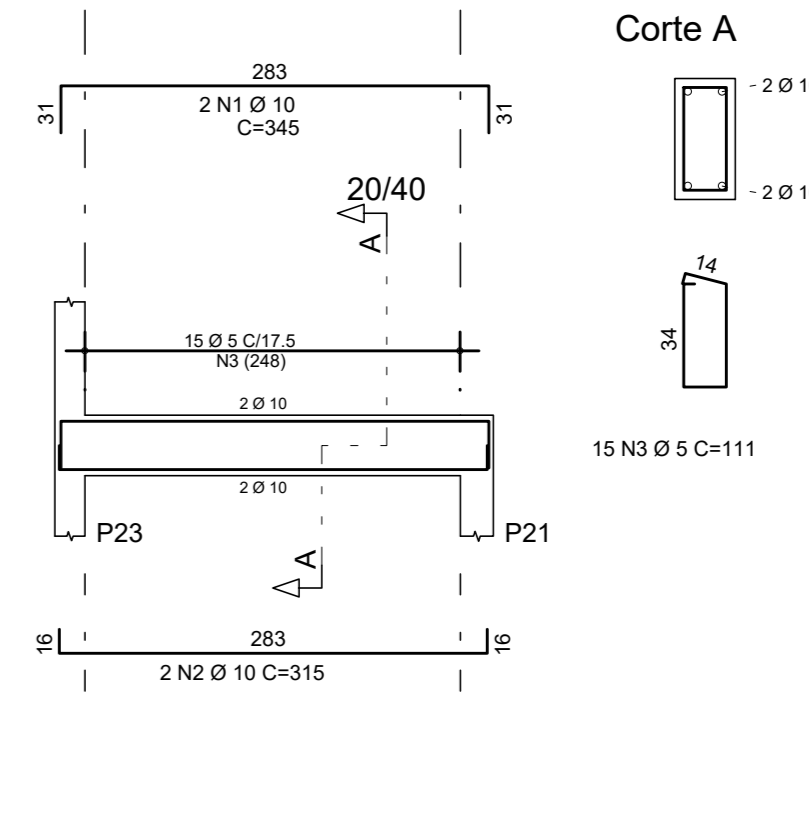


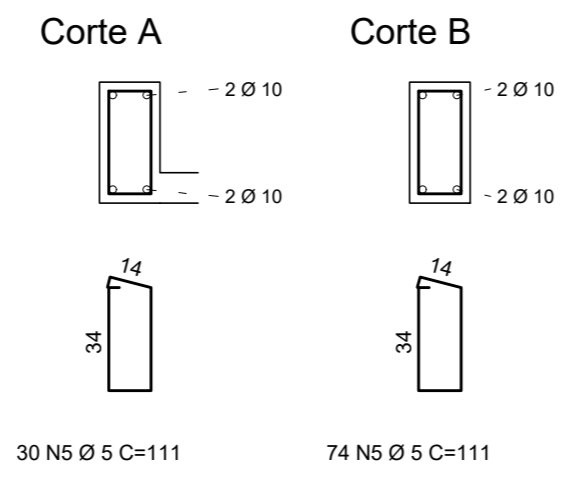
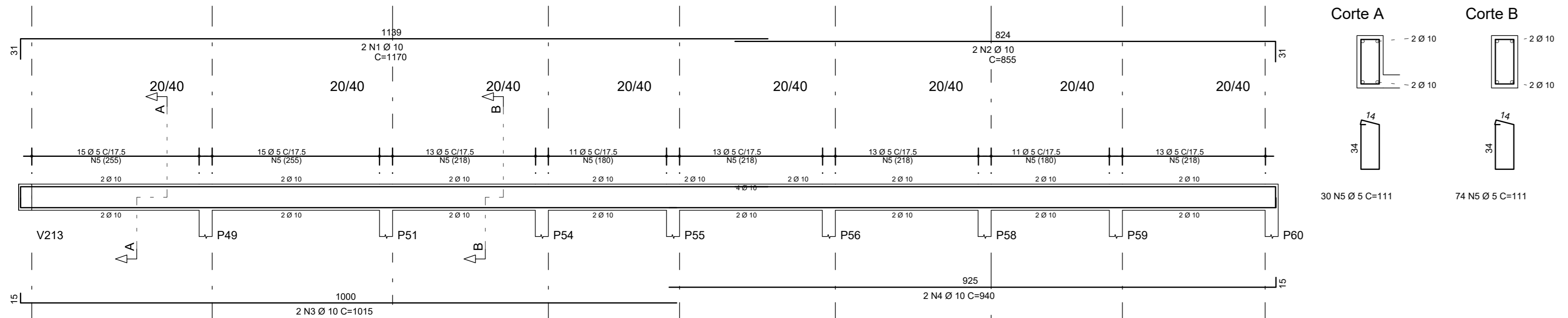
V211



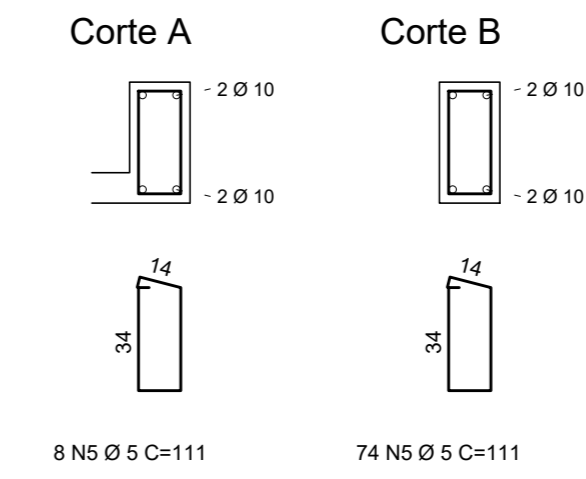
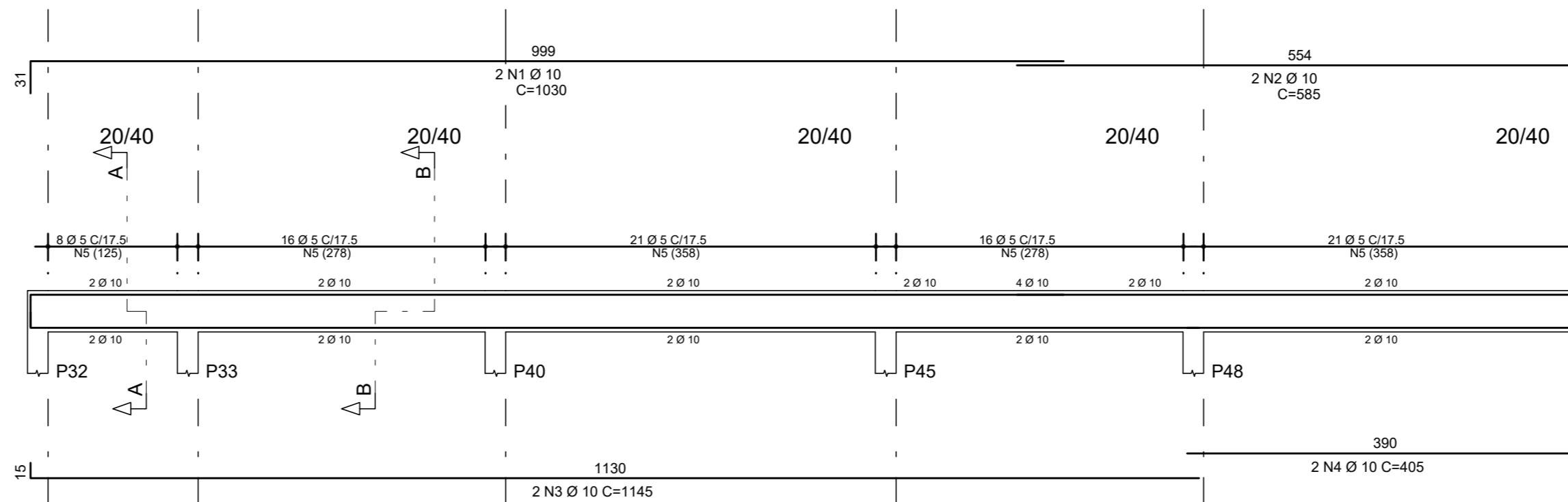
V204



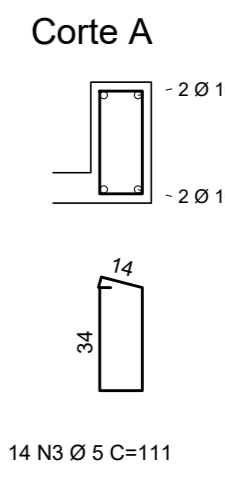
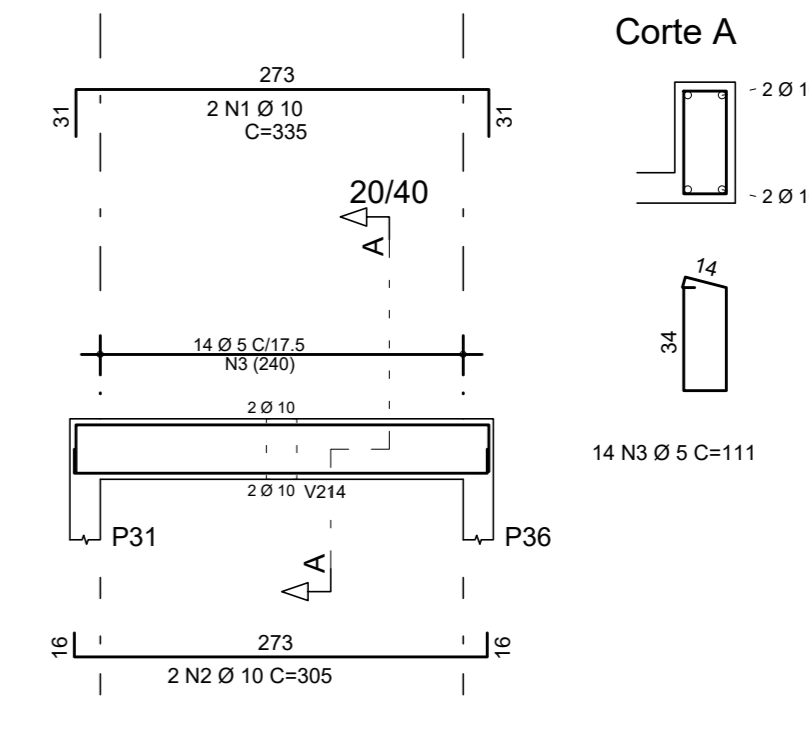
V208



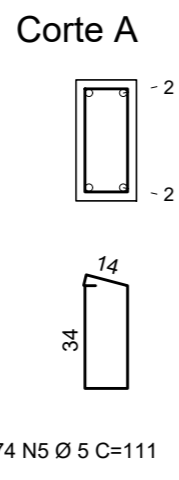
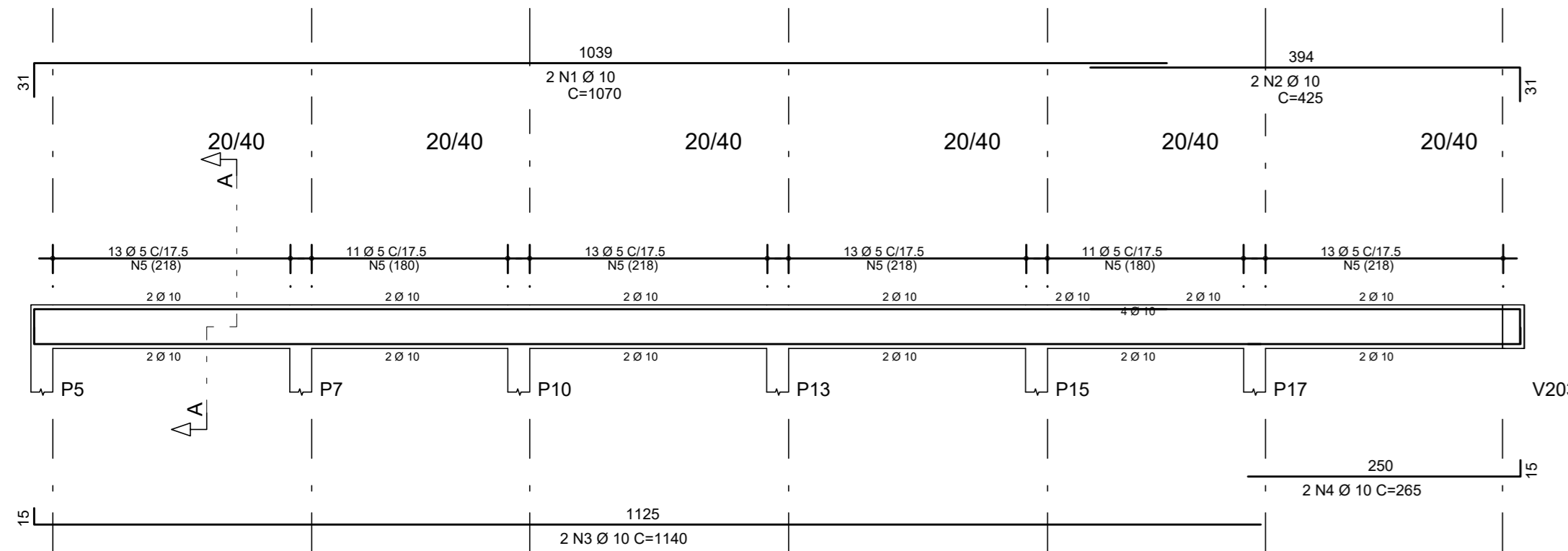
V207



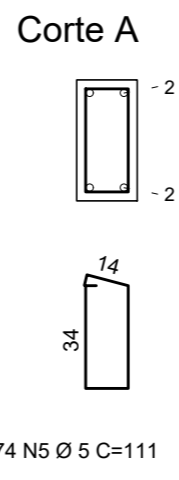
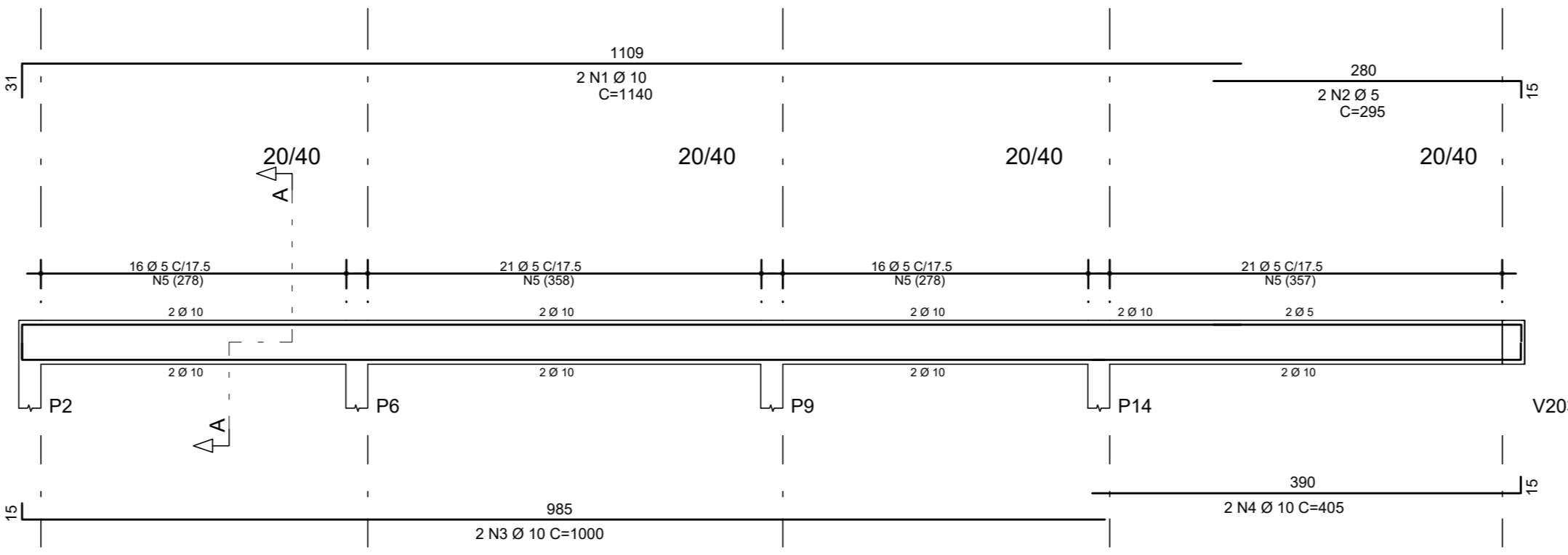
V206



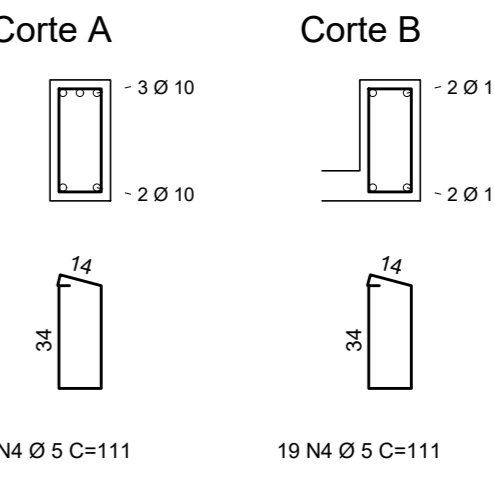
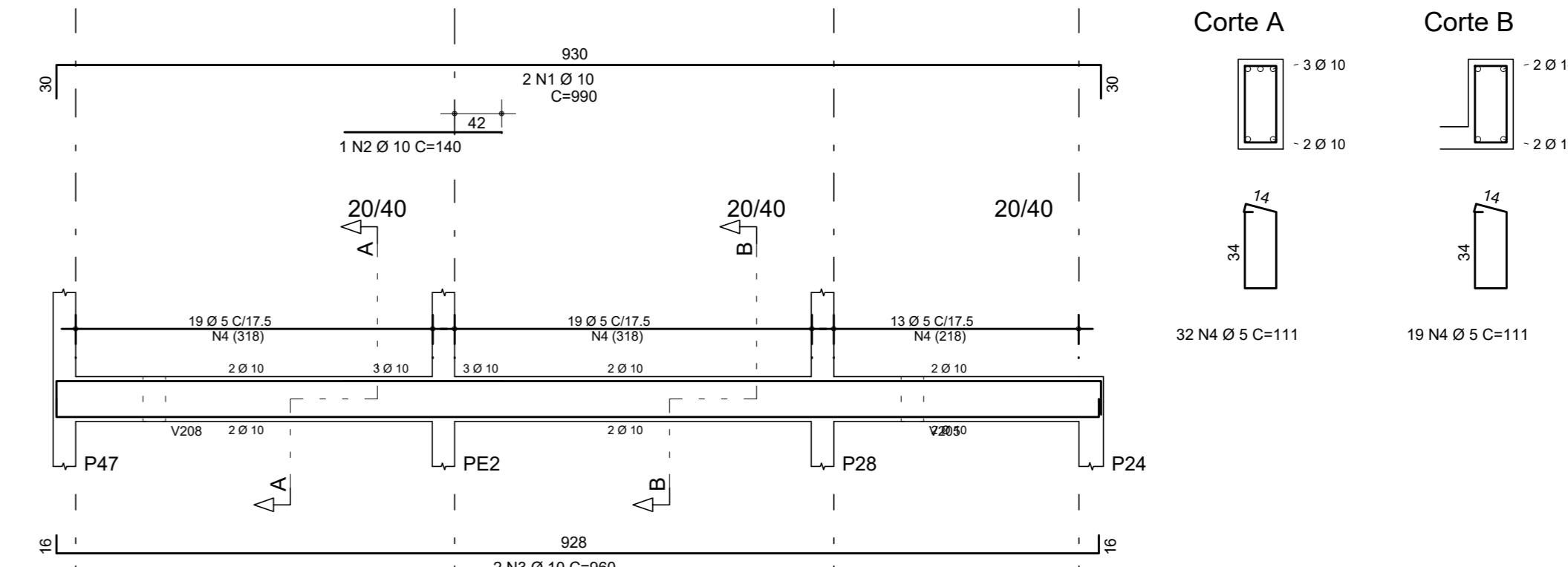
V209



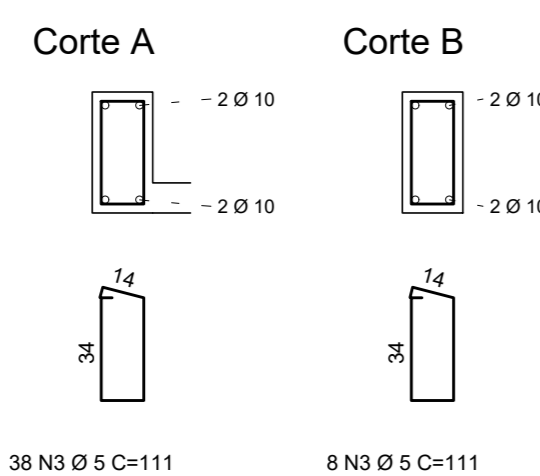
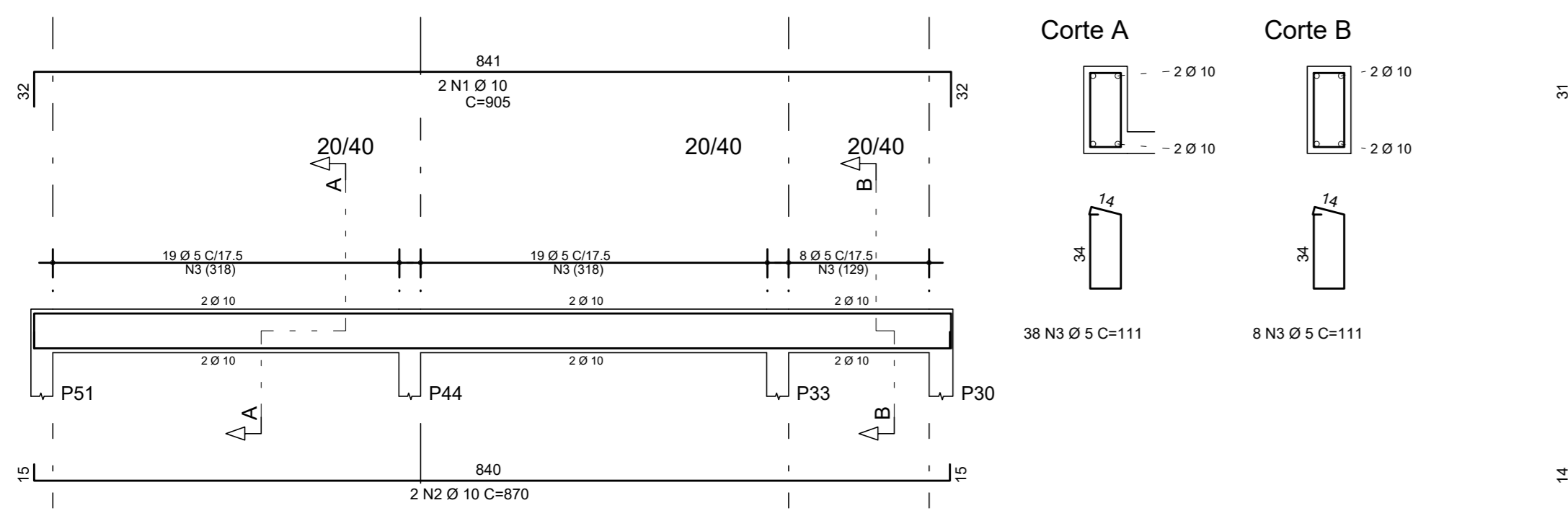
V210



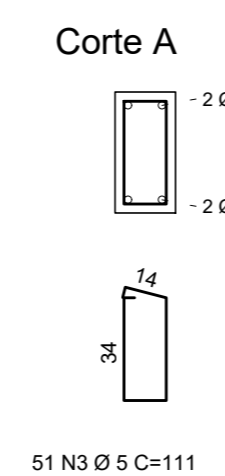
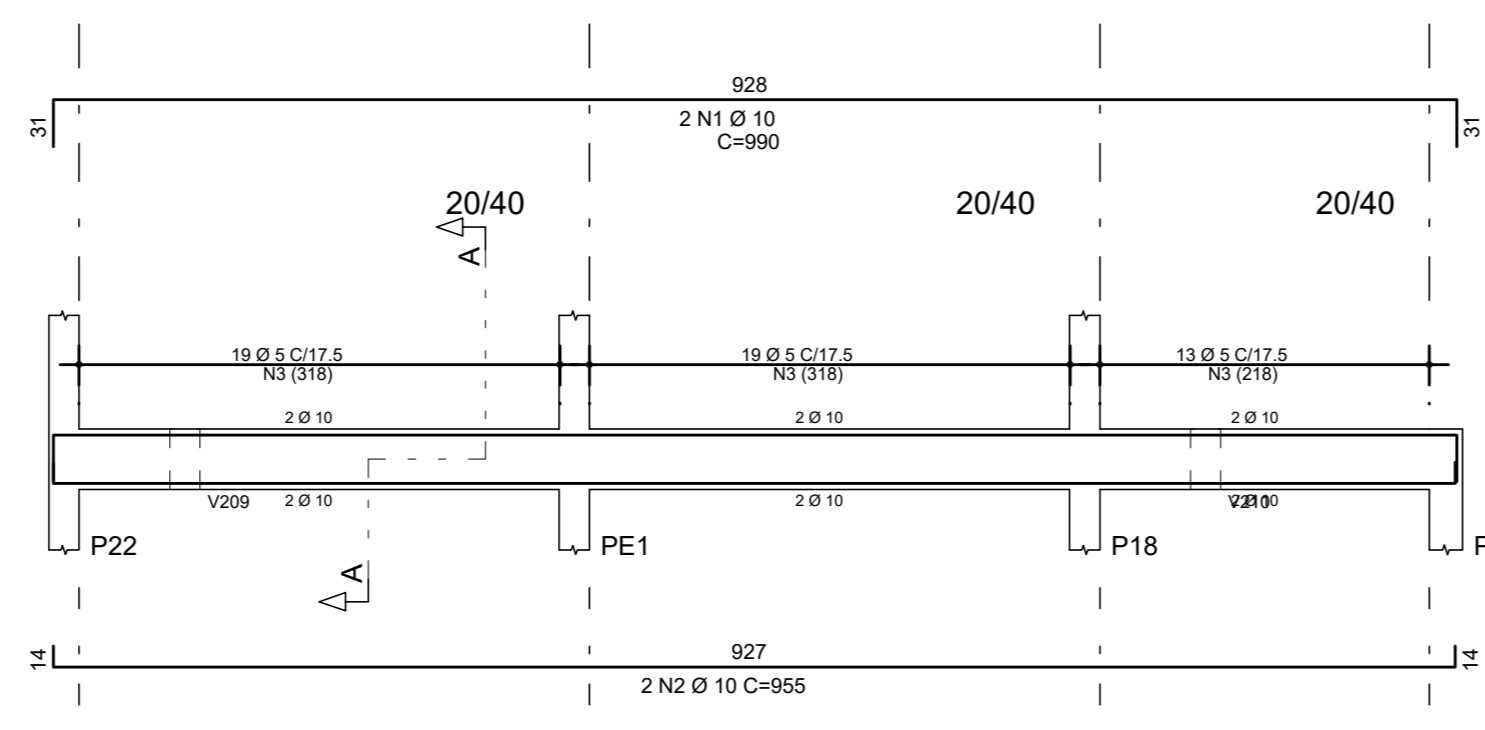
V213



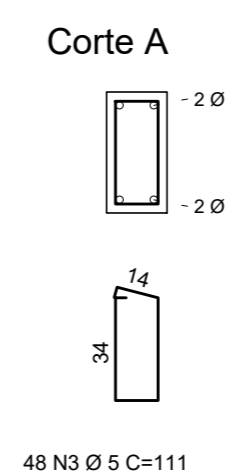
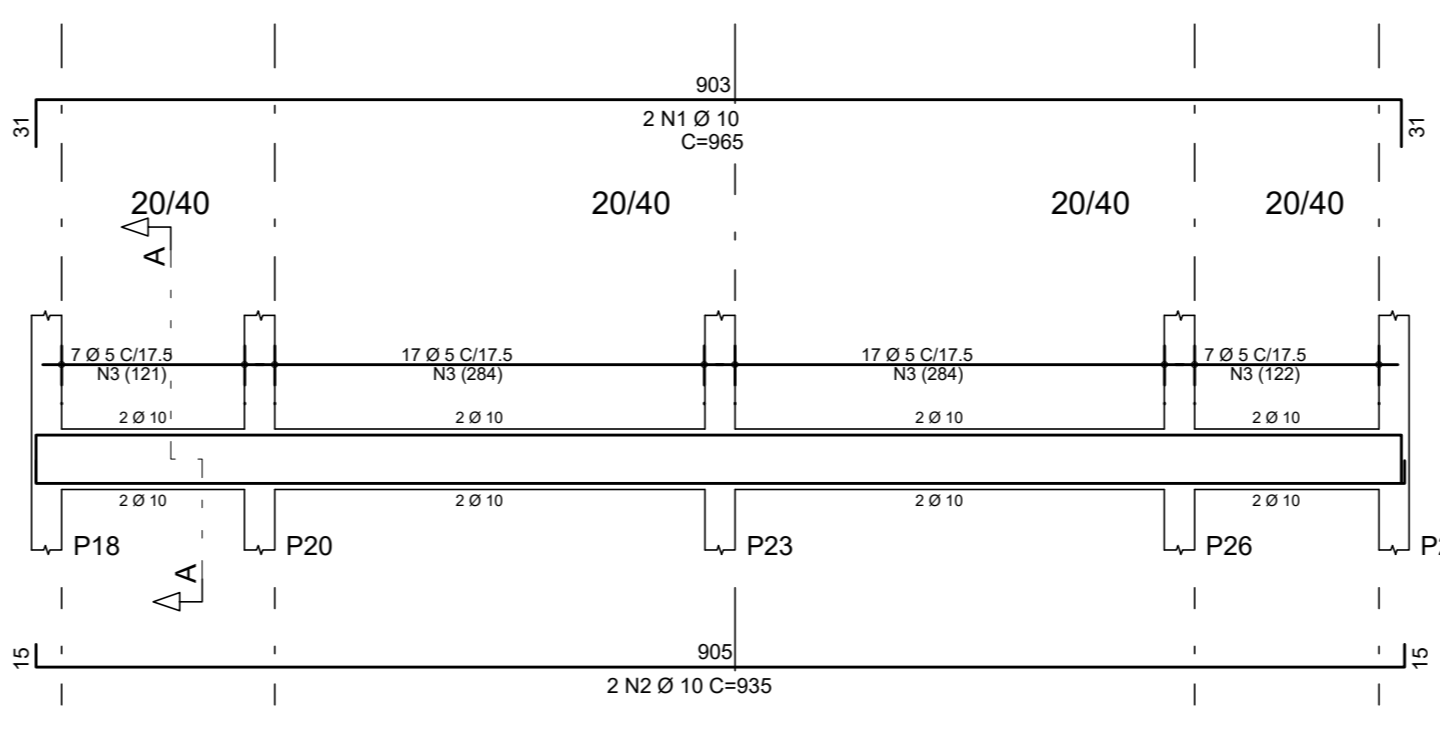
V216



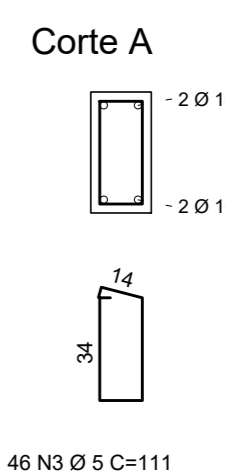
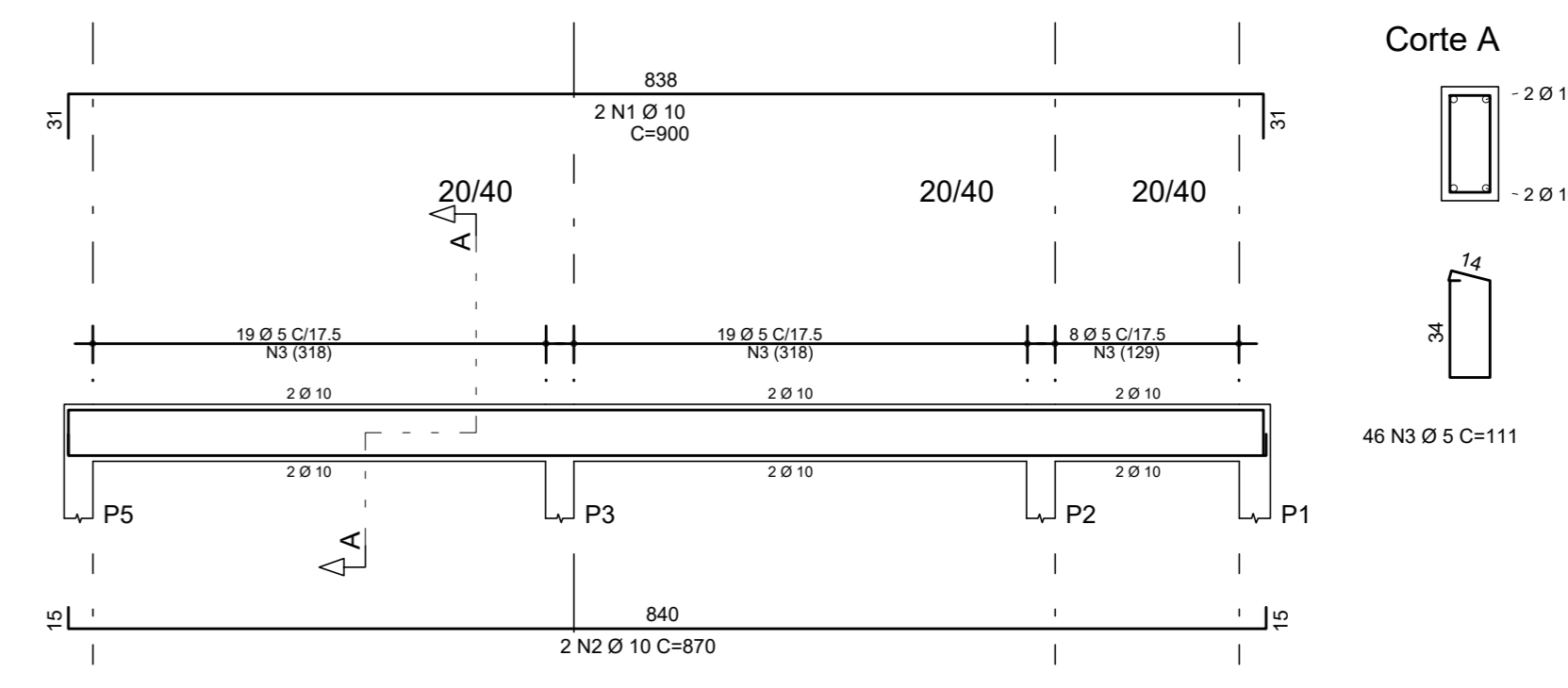
V203



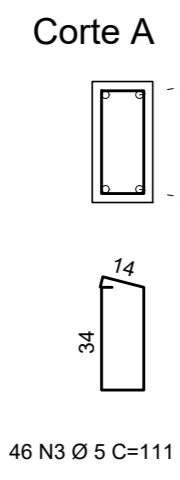
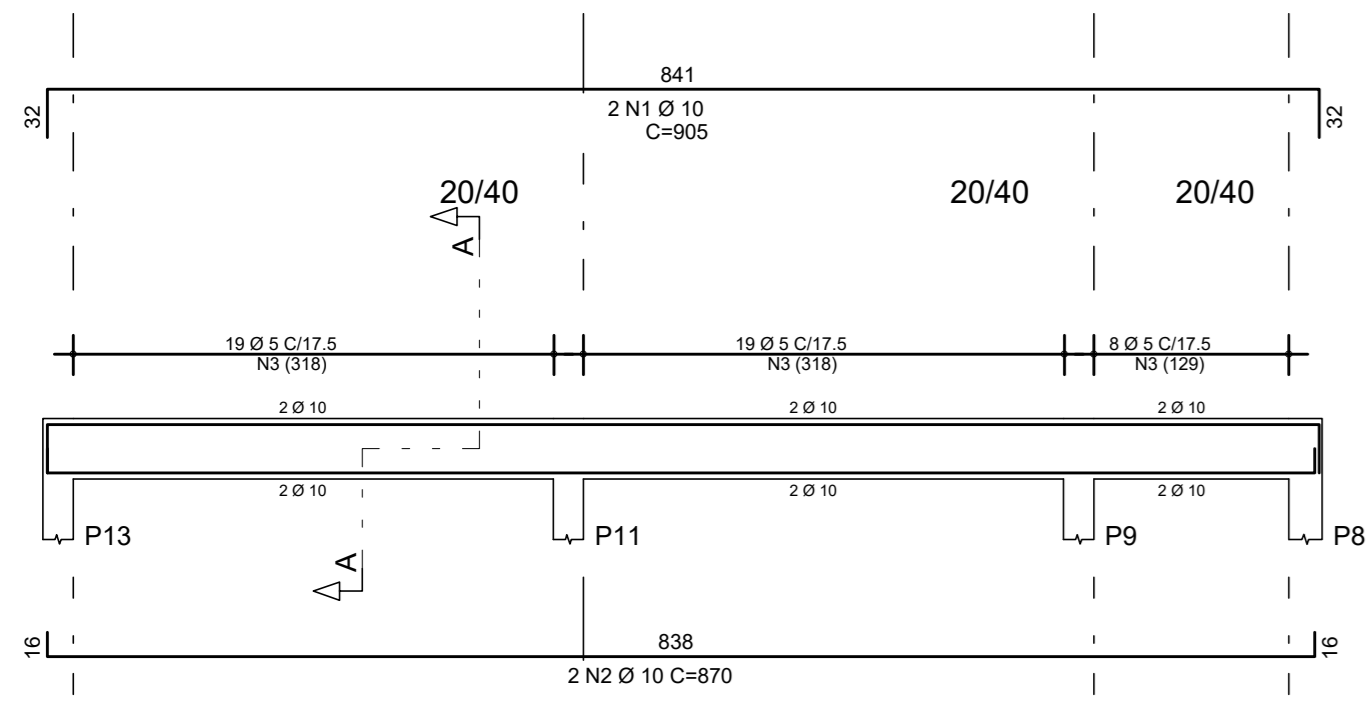
V212



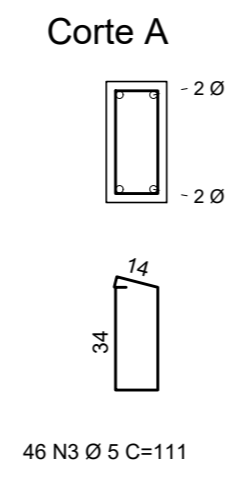
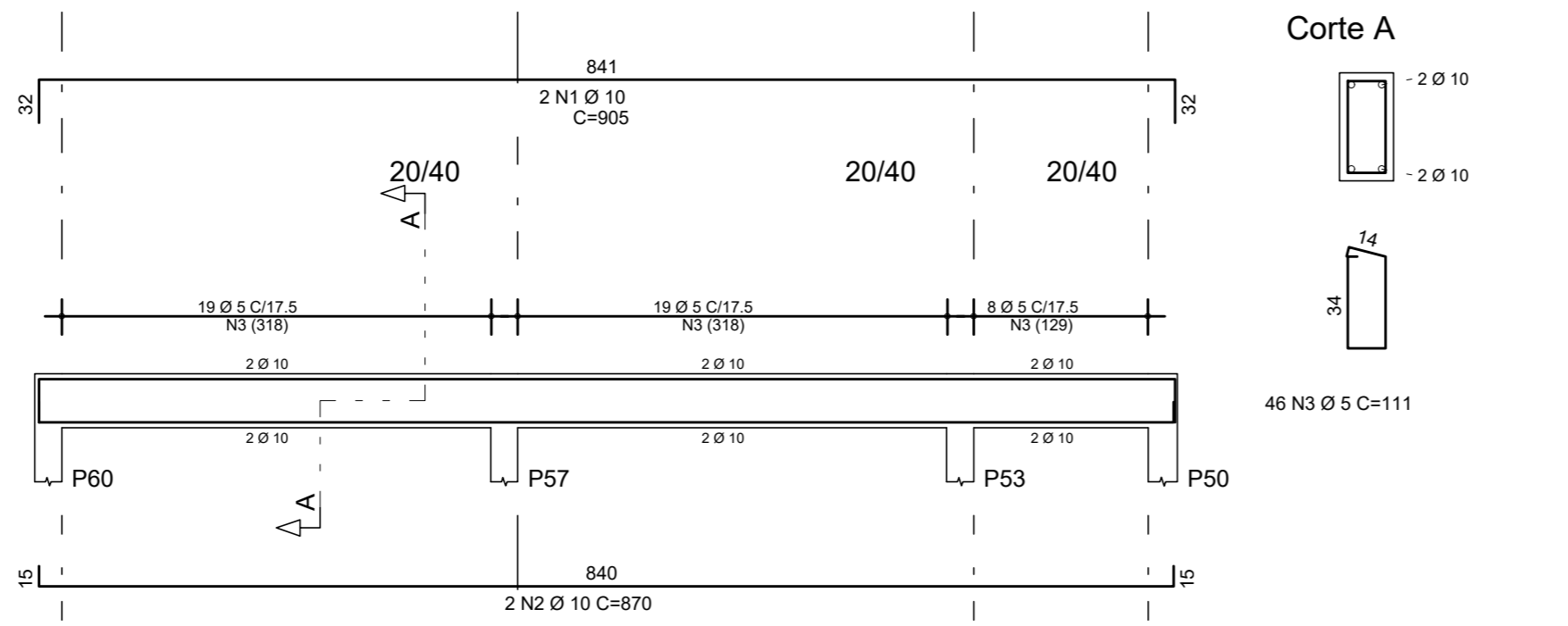
V201



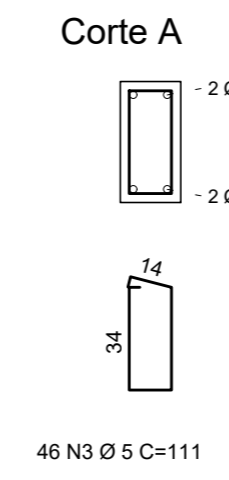
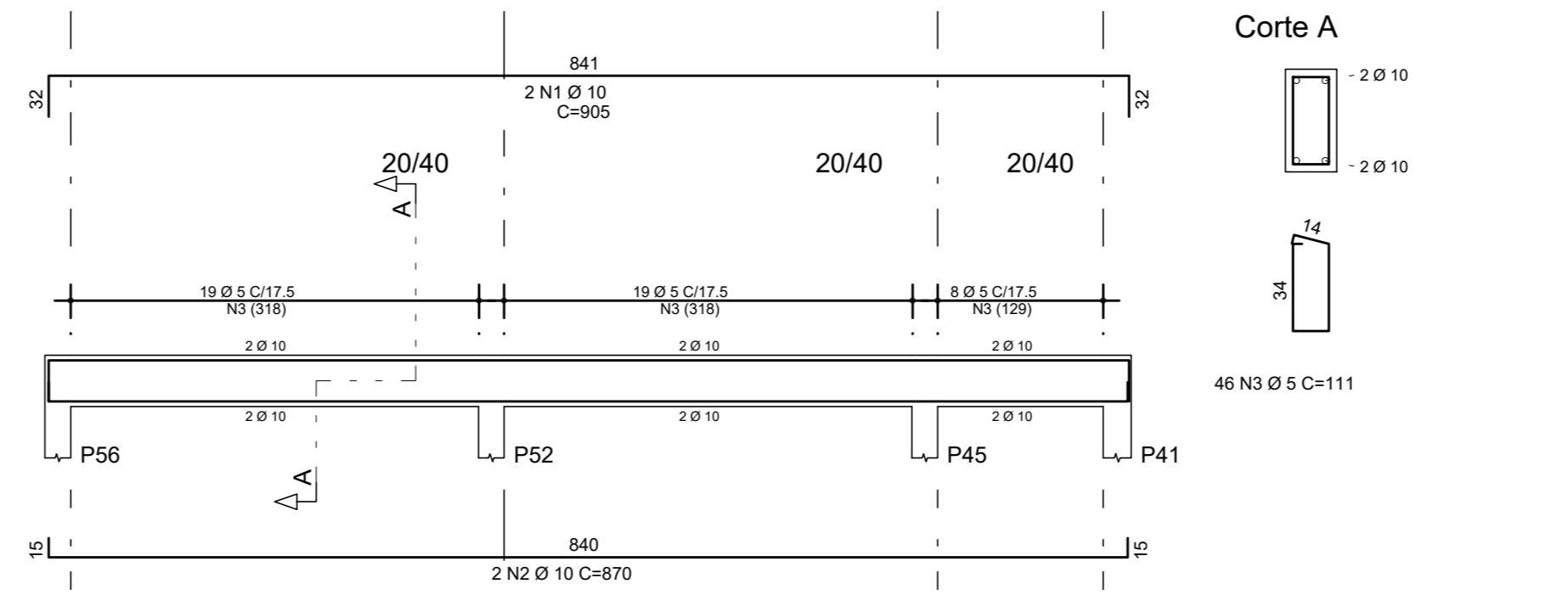
V202



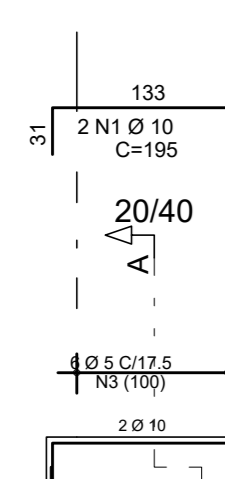
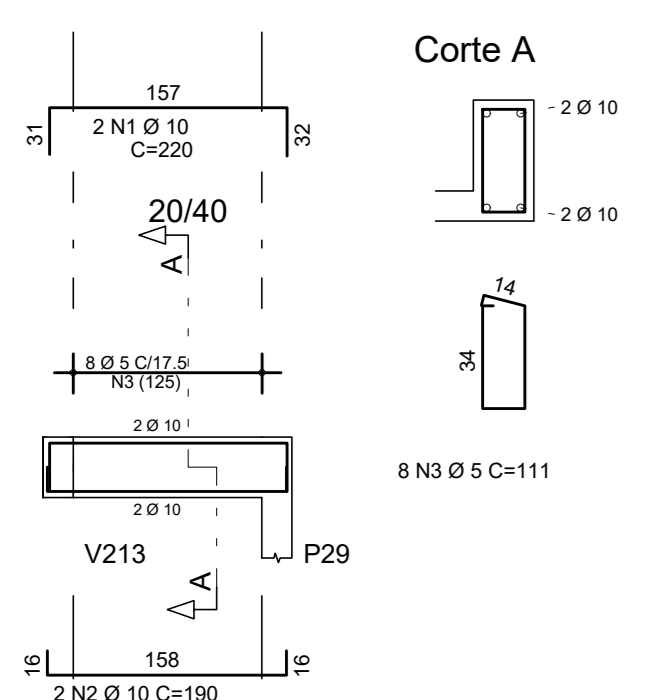
V219



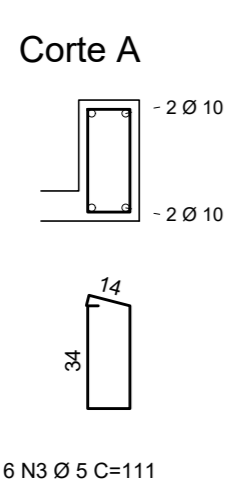
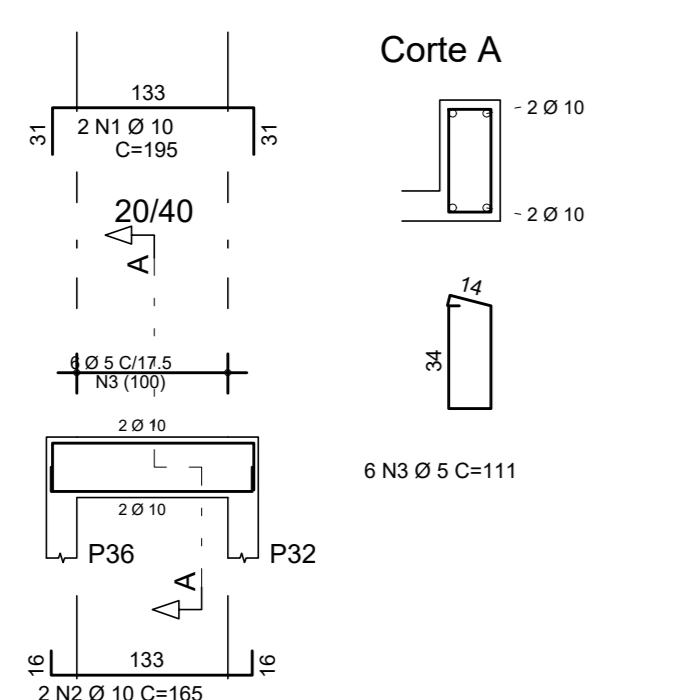
V218



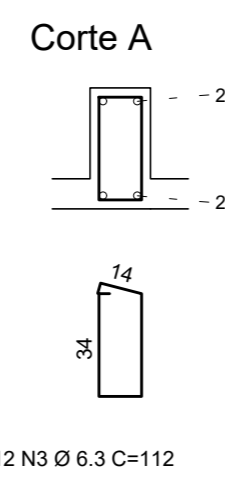
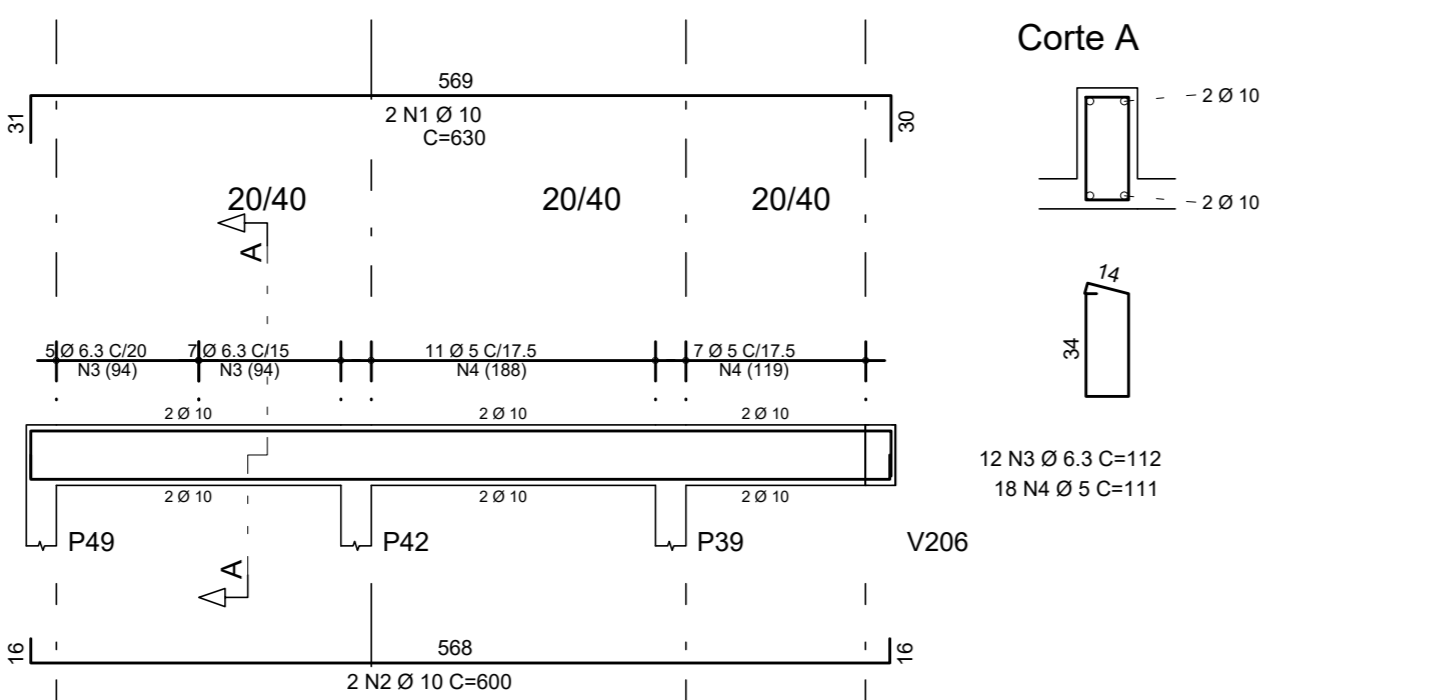
V205



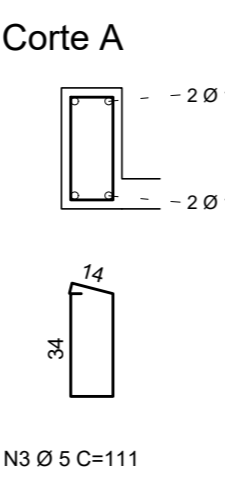
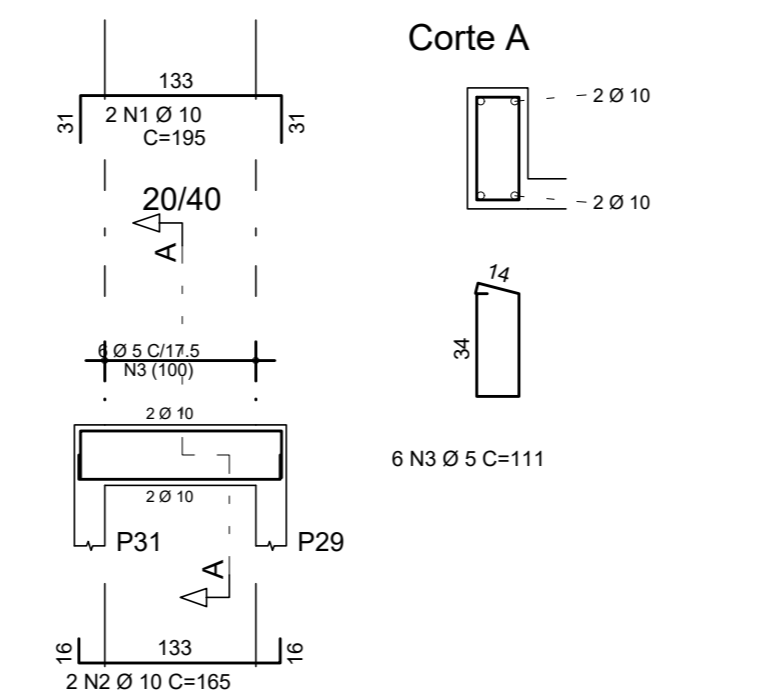
V217



V214



V215



ACO	POS	BIT (mm)	QUANT	COMPRIMENTO (cm)	UNID	TOTAL (cm)
V201	50A	1	10	2	900	1800
	50A	2	10	2	870	1740
	60B	3	5	46	111	5106
V202	50A	1	10	2	905	1810
	50A	2	10	2	870	1740
	60B	3	5	46	111	5106
V203	50A	1	10	2	900	1800
	50A	2	10	2	870	1740
	60B	3	5	46	111	5106
V204	50A	1	10	2	345	690
	50A	2	10	2	315	630
	60B	3	5	15	111	1665
V205	50A	1	10	2	220	440
	50A	2	10	2	190	380
	60B	3	5	8	111	888
V206	50A	1	10	2	335	670
	50A	2	10	2	305	610
	60B	3	5	13	111	1584
V207	50A	1	10	2	1030	2060
	50A	2	10	2	585	1170
	50A	3	10	2	1145	2290
	50A	4	10	2	405	810
	60B	5	5	82	111	9102
V208	50A	1	10	2	1170	2340
	50A	2	10	2	1710	3420
	50A	3	10	2	1015	2030
	50A	4	10	2	940	1880
	60B	5	5	104	111	11544
V209	50A	1	10	2	1070	2140
	50A	2	10	2	425	850
	50A	3	10	2	1140	2280
	50A	4	10	2	265	530
	60B	5	5	74	111	8214
V210	50A	1	10	2	1140	2280
	50A	2	10	2	1000	2000
	50A	3	10	2	405	810
	60B	5	5	74	111	8214
V211	50A	1	10	2	865	1730
	50A	2	10	2	1130	2260
	50A	3	10	2	900	1800
	50A	4	10	2	365	730
	50A	5	10	2	905	1810
	50A	6	10	2	1025	2050
	50A	7	10	2	1075	2150
	50A	8	10	2	900	1800
	50A	9	10	2	1040	2080
	50A	10	6,3	180	116	20540
V212	50A	1	10	2	965	1930
	50A	2	10	2	935	1870
	60B	3	5	48	111	5338
V213	50A	1	10	2	960	1920
	50A	2	10	2	140	280
	50A	3	10	2	900	1800
	60B	4	5	18	111	1998
V214	50A	1	10	2	630	1260
	50A	2	10	2	600	1200
	50A	3	6,3	12	112	1344
	60B	4	5	18	111	1998
V215	50A	1	10	2	195	390
	50A	2	10	2	195	390
	60B	3	5	6	111	666
V216	50A	1	10	2	905	1810
	50A	2	10	2	870	1740
	60B	3	5	46	111	5106
V217	50A	1	10	2	195	390
	50A	2	10	2	165	330
	60B	3	5	6	111	666
V218	50A	1	10	2	905	1810
	50A	2	10	2	870	1740
	60B	3	5	46	111	5106
V219	50A	1	10	2	905	1810
	50A	2	10	2	870	1740
	60B	3	5	46	111	5106

RESUMO AÇO CA 50-60			
ACO	BIT (mm)	COMPR (cm)	PESO (kg)
60B	5	873	134
50A	6,3	234	87
50A	10	785	484
Peso Total 60B =			134 kg
Peso Total 50A =			542 kg

PREFEITURA MUNICIPAL DE PELOTAS
SECRETARIA DE EDUCAÇÃO E ESPORTE
E.M.E.F. DONA MARIA JOAQUINA

SECRETARIO MUNICIPAL DA EDUCAÇÃO
Departamento de Engenharia
Eq. Técnica: Ang. Louise Witke
PRACA 20 DE SETEMBRO, 366
PELOTAS - RS - CEP 96015-280
FONE: (51) 33284-2618
e-mail: engenhariasmadr@gmail.com
Ang. Lúscian C. Garcia
Ang. Tâmará Curcio
Eng. Civil Nélio R. Almeida Aguiar
Eng. Civil José Henrique C. Cordeiro
Apelo Mourão, Carolina Basso S. Godini
Guaraciela Dias Vieira
Moisés Vieira dos Santos
Samuel Carvalho
Roger Silveira
Edison Almeida

RESPONSÁVEL TÉCNICO
PROJETO: ESTRUTURAL - E.M.E.F. DONA MARIA JOAQUINA
ENDERECO: Certoito Alegre - 3º Distrito - Interior - Pelotas / RS
CONTEUDO: VIGAS - COBERTURA
LOCAL E DATA: Pelotas, OUTUBRO DE 2020.
PRANCHA: 06/07
ESCALA: 1:50